

Anti-PSMA/FOLH1 antibody (1-106) [S3MR] (STJ11103663)

STJ11103663

GENERAL INFORMATION

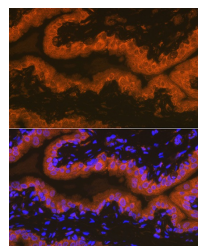
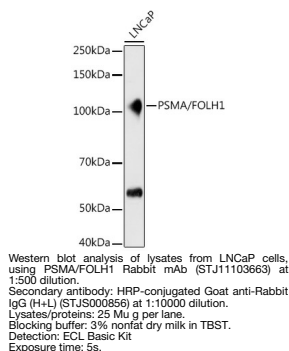
Product Type	Primary antibodies
Short Description	
Applications	WB/IF/IC/ELISA
Host/Source	Rabbit
Reactivity	Human/Rat

PRODUCT PROPERTIES

Clonality	Monoclonal
Clone ID	S3MR
Concentration	Lot specific
Conjugation	Unconjugated
Purification	Affinity purification
Dilution Range	WB:1:500-1:1000 IF/IC:1:50-1:200 ELISA:Recommended starting concentration is 1 Mu g/mL. Please optimize the concentration based on your specific assay requirements.
Formulation	PBS with 0.02% Sodium Azide, 0.05% BSA, 50% Glycerol, pH 7.3.
Isotype	IgG
Storage Instruction	Store at -20°C for up to 1 year from the date of receipt, and avoid repeat freeze-thaw cycles.

TARGET INFORMATION

Gene ID	2346
Gene Symbol	FOLH1
Uniprot ID	FOLH1_HUMAN
Immunogen	
Immunogen Region	1-106
Specificity	Recombinant fusion protein containing a sequence corresponding to amino acids 1-106 of human PSMA/FOLH1 (Q04609).
Immunogen Sequence	MWNLLHETDSAVATARRPRW LCAGALVLAGGFLLGFLFG WFIKSSNEATNITPKHNMKA FLDELKAENIKKFLYNFTQI PHLAGTEQNFQLAKQIQSQW KEFGDL



This product is suitable for in-vitro studies under the RESEARCH USE ONLY [RUO] licence. This product must not be used as for diagnostic or other medical purposes.
St John's Laboratory Ltd, Knowledge Dock Business Centre, University Way, London, E16 2RD | Tel: 0208 223 3081