

Anti-MRP2/ABCC2 antibody (1446-1545) [S0MR] (STJ11103660)

STJ11103660

GENERAL INFORMATION

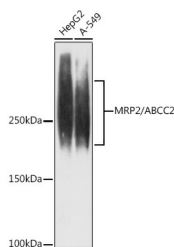
Product Type	Primary antibodies
Short Description	
Applications	WB/ELISA
Host/Source	Rabbit
Reactivity	Human

PRODUCT PROPERTIES

Clonality	Monoclonal
Clone ID	S0MR
Concentration	Lot specific
Conjugation	Unconjugated
Purification	Affinity purification
Dilution Range	WB:1:500-1:1000 ELISA:Recommended starting concentration is 1 Mu g/mL. Please optimize the concentration based on your specific assay requirements.
Formulation	PBS with 0.02% Sodium Azide, 0.05% BSA, 50% Glycerol, pH 7.3.
Isotype	IgG
Storage Instruction	Store at -20°C for up to 1 year from the date of receipt, and avoid repeat freeze-thaw cycles.

TARGET INFORMATION

Gene ID	1244
Gene Symbol	ABCC2
Uniprot ID	MRP2_HUMAN
Immunogen	
Immunogen Region	1446-1545
Specificity	A synthetic peptide corresponding to a sequence within amino acids 1446-1545 of human MRP2/ABCC2 (Q92887).
Immunogen Sequence	CLGRALLRKSKILVLDEATA AVDLETNLIQTITQNEFAH CTVTIAHRLHTIMDSKVM VLDNGKIIIECGSPPELLQIP GPFFYMAKEAGIENVNSTKF



Western blot analysis of various lysates using MRP2/ABCC2 Rabbit mAb (STJ11103660) at 1:1000 dilution.
Secondary antibody: HRP-conjugated Goat anti-Rabbit IgG (H+L) (STJS000856) at 1:10000 dilution.
Lysates/proteins: 25 Mu g per lane.
Blocking buffer: 3% nonfat dry milk in TBST.
Detection: ECL Enhanced Kit
Exposure time: 180s.

This product is suitable for in-vitro studies under the RESEARCH USE ONLY [RUO] licence. This product must not be used as for diagnostic or other medical purposes.
St John's Laboratory Ltd, Knowledge Dock Business Centre, University Way, London, E16 2RD | Tel: 0208 223 3081