

Anti-DNA Ligase I antibody (1-91) [S6MR] (STJ11103656)
STJ11103656

GENERAL INFORMATION

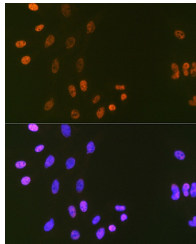
Product Type	Primary antibodies
Short Description	
Applications	WB/IHC-P/IF/ICC/ELISA
Host/Source	Rabbit
Reactivity	Human/Mouse/Rat

PRODUCT PROPERTIES

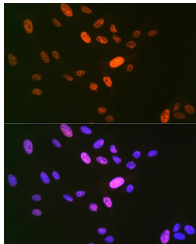
Clonality	Monoclonal
Clone ID	S6MR
Concentration	Lot specific
Conjugation	Unconjugated
Purification	Affinity purification
Dilution Range	WB:1:500-1:1000 IHC-P:1:50-1:200 IF/ICC:1:50-1:200 ELISA:Recommended starting concentration is 1 μ g/mL. Please optimize the concentration based on your specific assay requirements.
Formulation	PBS with 0.02% Sodium Azide, 0.05% BSA, 50% Glycerol, pH 7.3.
Isotype	IgG
Storage Instruction	Store at -20°C for up to 1 year from the date of receipt, and avoid repeat freeze-thaw cycles.

TARGET INFORMATION

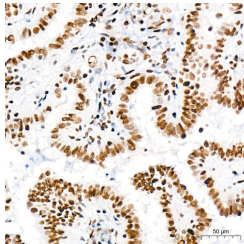
Gene ID	3978
Gene Symbol	LIG1
Uniprot ID	DNLI1_HUMAN
Immunogen	
Immunogen Region	1-91
Specificity	Recombinant fusion protein containing a sequence corresponding to amino acids 1-91 of human DNA Ligase I (P18858).
Immunogen Sequence	MQRSIMSFFHPKKEGKAKKP EKEASNSSRETEPPPKAALK EWNGVSESDSPVKRPGRKA ARVLGSEGEEDSPAKG QKPALDCSQVS



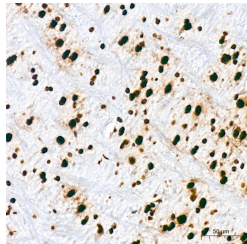
Western blot analysis of lysates from Jurkat cells, using DNA Ligase I Rabbit mAb (STJ11103656) at 1:1000 dilution.
Secondary antibody: HRP-conjugated Goat anti-Rabbit IgG (H+L) (STJ5000656) at 1:10000 dilution.
Lysates/proteins: 25 μ g per lane.
Blocking buffer: 3% nonfat dry milk in TBST.
Detection: ECL Basic Kit
Exposure time: 30s.



Immunohistochemistry analysis of paraffin-embedded rat lung tissue using DNA Ligase I Rabbit mAb (STJ11103656) at a dilution of 1:200 (40x lens). A high pressure antigen retrieval was performed with 0.01 M citrate buffer (pH 6.0) prior to immunohistochemistry staining.



Immunohistochemistry analysis of paraffin-embedded human spleen tissue using DNA Ligase I Rabbit mAb (STJ11103656) at a dilution of 1:200 (40x lens). A high pressure antigen retrieval was performed with 0.01 M citrate buffer (pH 6.0) prior to immunohistochemistry staining.



Immunohistochemistry analysis of paraffin-embedded rat brain tissue using DNA Ligase I Rabbit mAb (STJ11103656) at a dilution of 1:200 (40x lens). A high pressure antigen retrieval was performed with 0.01 M citrate buffer (pH 6.0) prior to immunohistochemistry staining.

This product is suitable for in-vitro studies under the RESEARCH USE ONLY [RUO] licence. This product must not be used as for diagnostic or other medical purposes.
St John's Laboratory Ltd, Knowledge Dock Business Centre, University Way, London, E16 2RD | Tel: 0208 223 3081