

Anti-NFIB/NF1B2 antibody (321-420) [S9MR] (STJ11103649)

STJ11103649

GENERAL INFORMATION

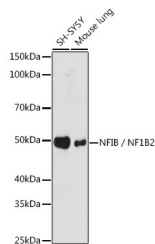
Product Type	Primary antibodies
Short Description	
Applications	WB/ELISA
Host/Source	Rabbit
Reactivity	Human/Mouse

PRODUCT PROPERTIES

Clonality	Monoclonal
Clone ID	S9MR
Concentration	Lot specific
Conjugation	Unconjugated
Purification	Affinity purification
Dilution Range	WB:1:500-1:1000 ELISA:Recommended starting concentration is 1 Mu g/mL. Please optimize the concentration based on your specific assay requirements.
Formulation	PBS with 0.02% Sodium Azide, 0.05% BSA, 50% Glycerol, pH 7.3.
Isotype	IgG
Storage Instruction	Store at -20°C for up to 1 year from the date of receipt, and avoid repeat freeze-thaw cycles.

TARGET INFORMATION

Gene ID	4781
Gene Symbol	NFIB
Uniprot ID	NFIB_HUMAN
Immunogen	
Immunogen	321-420
Region	
Specificity	A synthetic peptide corresponding to a sequence within amino acids 321-420 of human NFIB/NF1B2 (NP_005587.2).
Immunogen	KPLFSSASPQDSSPRLSTFP QHHHPGIPGVAHSVISTRTP PPPSPLPFPTQAILPPAPSS YFSHPTIRYPHNLNPQDTLK
Sequence	NYVPSYDPSPQTSQSWYLG



Western blot analysis of various lysates using NFIB/NF1B2 Rabbit mAb (STJ11103649) at 1:1000 dilution.
Secondary antibody: HRP-conjugated Goat anti-Rabbit IgG (H+L) (STJ/S000866) at 1:10000 dilution.
Lysates/proteins: 25 Mu g per lane.
Blocking buffer: 3% nonfat dry milk in TBST.
Detection: ECL Basic Kit
Exposure time: 180s.

This product is suitable for in-vitro studies under the RESEARCH USE ONLY [RUO] licence. This product must not be used as for diagnostic or other medical purposes.
St John's Laboratory Ltd, Knowledge Dock Business Centre, University Way, London, E16 2RD | Tel: 0208 223 3081