

## Anti-Butyrylcholinesterase antibody (500-602) [S6MR] (STJ11103636)

STJ11103636

### GENERAL INFORMATION

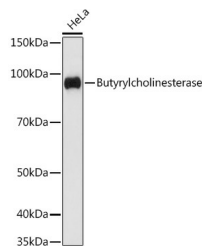
<b>Product Type</b>	Primary antibodies
<b>Short Description</b>	
<b>Applications</b>	WB/ELISA
<b>Host/Source</b>	Rabbit
<b>Reactivity</b>	Human

### PRODUCT PROPERTIES

<b>Clonality</b>	Monoclonal
<b>Clone ID</b>	S6MR
<b>Concentration</b>	Lot specific
<b>Conjugation</b>	Unconjugated
<b>Purification</b>	Affinity purification
<b>Dilution Range</b>	WB:1:500-1:1000 ELISA:Recommended starting concentration is 1 Mu g/mL. Please optimize the concentration based on your specific assay requirements.
<b>Formulation</b>	PBS with 0.02% Sodium Azide, 0.05% BSA, 50% Glycerol, pH 7.3.
<b>Isotype</b>	IgG
<b>Storage</b>	Store at -20°C for up to 1 year from the date of receipt, and avoid repeat freeze-thaw cycles.
<b>Instruction</b>	

### TARGET INFORMATION

<b>Gene ID</b>	590
<b>Gene Symbol</b>	BCHE
<b>Uniprot ID</b>	CHLE_HUMAN
<b>Immunogen</b>	
<b>Immunogen Region</b>	500-602
<b>Specificity</b>	A synthetic peptide corresponding to a sequence within amino acids 500-602 of human Butyrylcholinesterase (P06276).
<b>Immunogen Sequence</b>	ANFAKYGNPNETQNNSTSWP VFKSTEQKYLTLNTESTRIM TKLRAQQCRFWTSFFPKVLE MTGNIDEAEWEWKAGFHRWN NYMMDWKNQFNDYTSKKESC VGL



Western blot analysis of lysates from HeLa cells, using Butyrylcholinesterase Rabbit mAb (STJ11103636) at 1:1000 dilution.  
Secondary antibody: HRP-conjugated Goat anti-Rabbit IgG (H+L) (STJS000856) at 1:10000 dilution.  
Lysates/proteins: 25 Mu g per lane.  
Blocking buffer: 3% nonfat dry milk in TBST.  
Detection: ECL Basic Kit  
Exposure time: 60s.

This product is suitable for in-vitro studies under the RESEARCH USE ONLY [RUO] licence. This product must not be used as for diagnostic or other medical purposes.  
St John's Laboratory Ltd, Knowledge Dock Business Centre, University Way, London, E16 2RD | Tel: 0208 223 3081