

Anti-KDM1/LSD1 antibody (700-811) [S0MR] (STJ11103630)

STJ11103630

GENERAL INFORMATION

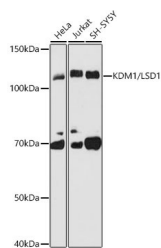
Product Type	Primary antibodies
Short Description	
Applications	WB/IHC-P/ELISA
Host/Source	Rabbit
Reactivity	Human

PRODUCT PROPERTIES

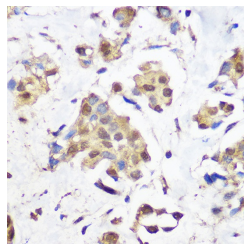
Clonality	Monoclonal
Clone ID	S0MR
Concentration	Lot specific
Conjugation	Unconjugated
Purification	Affinity purification
Dilution Range	WB:1:500-1:1000 IHC-P:1:50-1:200 ELISA:Recommended starting concentration is 1 µg/mL. Please optimize the concentration based on your specific assay requirements.
Formulation	PBS with 0.02% Sodium Azide, 0.05% BSA, 50% Glycerol, pH 7.3.
Isotype	IgG
Storage Instruction	Store at -20°C for up to 1 year from the date of receipt, and avoid repeat freeze-thaw cycles.

TARGET INFORMATION

Gene ID	23028
Gene Symbol	KDM1A
Uniprot ID	KDM1A_HUMAN
Immunogen	
Immunogen Region	700-811
Specificity	Recombinant fusion protein containing a sequence corresponding to amino acids 700-811 of human KDM1/LSD1 (NP_055828.2).
Immunogen Sequence	APILLALVAGEAAGIMENIS DDVIVGRCLAILKGIFGSSA VPQPKETVSRWRADPWARG SYSYVAAGSSGNDYDLMAQP ITPGPSIPGAPQPIPLFFA GEHTIRNYPATV



Western blot analysis of various lysates using KDM1/LSD1 Rabbit mAb (STJ11103630) at 1:1000 dilution. Secondary antibody: HRP-conjugated Goat anti-Rabbit IgG (H+L) (STJS000856) at 1:10000 dilution. Lysates/proteins: 25 µg per lane. Blocking buffer: 3% nonfat dry milk in TBST. Detection: ECL Basic Kit. Exposure time: 180s.



Immunohistochemistry analysis of paraffin-embedded Human breast cancer using KDM1/LSD1 Rabbit mAb (STJ11103630) at dilution of 1:100 (40x lens). Microwave antigen retrieval performed with 0.01M Tris/EDTA Buffer (pH 9.0) prior to immunohistochemistry staining.

This product is suitable for in-vitro studies under the RESEARCH USE ONLY [RUO] licence. This product must not be used as for diagnostic or other medical purposes.
St John's Laboratory Ltd, Knowledge Dock Business Centre, University Way, London, E16 2RD | Tel: 0208 223 3081