

Anti-A-RAF antibody (166-290) [S8MR] (STJ11103628)

STJ11103628

GENERAL INFORMATION

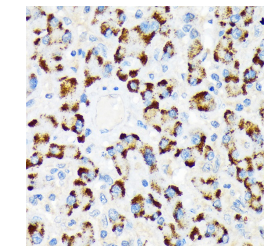
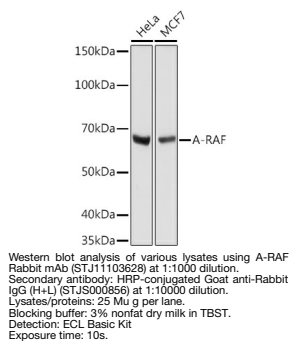
Product Type	Primary antibodies
Short Description	
Applications	WB/IHC-P/ELISA
Host/Source	Rabbit
Reactivity	Human

PRODUCT PROPERTIES

Clonality	Monoclonal
Clone ID	S8MR
Concentration	Lot specific
Conjugation	Unconjugated
Purification	Affinity purification
Dilution Range	WB:1:500-1:1000 IHC-P:1:50-1:200 ELISA:Recommended starting concentration is 1 Mu g/mL. Please optimize the concentration based on your specific assay requirements.
Formulation	PBS with 0.02% Sodium Azide, 0.05% BSA, 50% Glycerol, pH 7.3.
Isotype	IgG
Storage Instruction	Store at -20°C for up to 1 year from the date of receipt, and avoid repeat freeze-thaw cycles.

TARGET INFORMATION

Gene ID	369
Gene Symbol	ARAF
Uniprot ID	ARAF_HUMAN
Immunogen	
Immunogen Region	166-290
Specificity	Recombinant fusion protein containing a sequence corresponding to amino acids 166-290 of human A-RAF (P10398).
Immunogen Sequence	RQHEAPSNRPLNELLPQGP SPRTQHCDPEHFPFPAPANA PLQRIIRSTSTPNVHVMVSTTA PMDSNLIQLTGQSFSTDAAG SRGGSDGTGRGSPSPASVSS GRKSPHSKSPAERERKSLA DDKKK



Immunohistochemistry analysis of paraffin-embedded Human liver using A-RAF Rabbit mAb (STJ11103628) at dilution of 1:100 (40x lens). Microwave antigen retrieval performed with 0.01M Tris/EDTA Buffer (pH 9.0) prior to immunohistochemistry staining.

This product is suitable for in-vitro studies under the RESEARCH USE ONLY [RUO] licence. This product must not be used as for diagnostic or other medical purposes.
St John's Laboratory Ltd, Knowledge Dock Business Centre, University Way, London, E16 2RD | Tel: 0208 223 3081