

Anti-AMD1 antibody (75-334) (STJ11103623)

STJ11103623

GENERAL INFORMATION

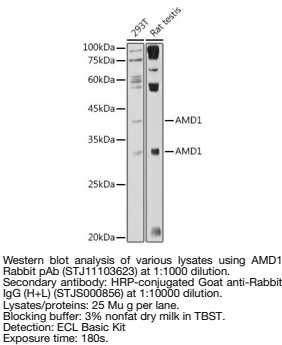
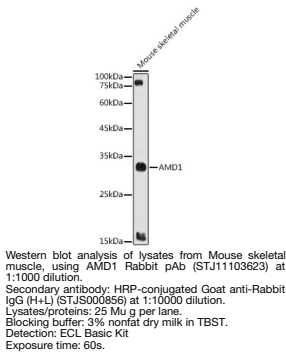
| | |
|--------------------------|--------------------|
| Product Type | Primary antibodies |
| Short Description | |
| Applications | WB/ELISA |
| Host/Source | Rabbit |
| Reactivity | Human/Mouse/Rat |

PRODUCT PROPERTIES

| | |
|----------------------|---|
| Clonality | Polyclonal |
| Clone ID | |
| Concentration | Lot specific |
| Conjugation | Unconjugated |
| Purification | Affinity purification |
| Dilution | WB:1:500-1:1000 |
| Range | ELISA:Recommended starting concentration is 1 Mu g/mL. Please optimize the concentration based on your specific assay requirements. |
| Formulation | PBS with 0.02% Sodium Azide, 50% Glycerol, pH 7.3. |
| Isotype | IgG |
| Storage | Store at-20°C for up to 1 year from the date of receipt, and avoid repeat freeze-thaw cycles. |
| Instruction | |

TARGET INFORMATION

| | |
|---------------------------|--|
| Gene ID | 262 |
| Gene Symbol | AMD1 |
| Uniprot ID | DCAM_HUMAN |
| Immunogen | |
| Immunogen Region | 75-334 |
| Specificity | Recombinant fusion protein containing a sequence corresponding to amino acids 75-334 of human AMD1 (NP_001625.2). RRFILKTCGTLLLLKALVPL LKLARDYSGFDSIQSFFYSR KNFMKPSHQGYPHRNFQEEI EFLNAIFPNGAAYCMGRMNS DCWYLYTLDFPESRVISQPD QTLEILMSELDPAVMDQFYM KDGVTAKDVTRESGIRDLP GSVIDATMFNPGYSMNGMK SDGTYWTIHITPEPEFSYVS FETNLSQTSYDDLIRKVVEV FKPGKFVITLFFVNQSSKCRV VLASPQKIEGFKRLDCQSA |
| Immunogen Sequence | |



This product is suitable for in-vitro studies under the RESEARCH USE ONLY [RUO] licence. This product must not be used as for diagnostic or other medical purposes.
St John's Laboratory Ltd, Knowledge Dock Business Centre, University Way, London, E16 2RD | Tel: 0208 223 3081