

Anti-Cyclin B2 antibody (1-100) [S8MR] (STJ11103618)

STJ11103618

GENERAL INFORMATION

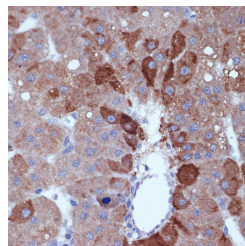
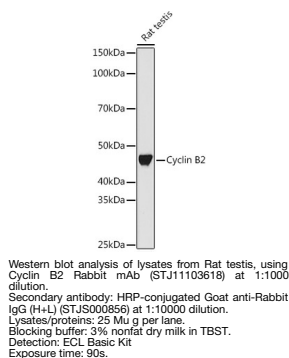
Product Type	Primary antibodies
Short Description	
Applications	WB/IHC-P/IF/ICC/ELISA
Host/Source	Rabbit
Reactivity	Human/Mouse/Rat

PRODUCT PROPERTIES

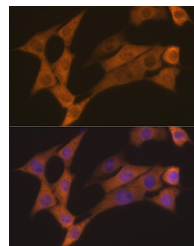
Clonality	Monoclonal
Clone ID	S8MR
Concentration	Lot specific
Conjugation	Unconjugated
Purification	Affinity purification
Dilution Range	WB:1:500-1:1000 IHC-P:1:50-1:200 IF/ICC:1:50-1:200 ELISA:Recommended starting concentration is 1 Mu g/mL. Please optimize the concentration based on your specific assay requirements.
Formulation	PBS with 0.02% Sodium Azide, 0.05% BSA, 50% Glycerol, pH 7.3.
Isotype	IgG
Storage Instruction	Store at -20°C for up to 1 year from the date of receipt, and avoid repeat freeze-thaw cycles.

TARGET INFORMATION

Gene ID	9133
Gene Symbol	CCNB2
Uniprot ID	CCNB2_HUMAN
Immunogen	
Immunogen Region	1-100
Specificity	A synthetic peptide corresponding to a sequence within amino acids 1-100 of human Cyclin B2 (O95067).
Immunogen Sequence	MALLRRPTVSSDLENIDTGV NSKVKSHVTIRRTVLEEIGN RVTTAAQVAKKAQNTKVPV QPTKTTNVNKQLKPTASVKP VQMEKLAPKGPSPTPEDVSM



Immunohistochemistry analysis of paraffin-embedded Human liver cancer using Cyclin B2 Rabbit mAb (STJ11103618) at dilution of 1:100 (40x lens). Microwave antigen retrieval performed with 0.01M Tris/EDTA Buffer (pH 9.0) prior to immunohistochemistry staining.



Confocal imaging of NIH/3T3 cells using Cyclin B2 Rabbit mAb (STJ11103618, dilution 1:100) followed by a further incubation with Cy3 Goat Anti-Rabbit IgG (H+L) (STJS001166, dilution 1:500) (Red). The cells were counterstained with Alpha-Tubulin Mouse mAb (STJ11107556, dilution 1:400) followed by incubation with AF648 488-conjugated Goat Anti-Mouse IgG (H+L) antibody (STJS001209, dilution 1:500) (Green). DAPI was used for nuclear staining (Blue). Objective: 100x.

This product is suitable for in-vitro studies under the RESEARCH USE ONLY [RUO] licence. This product must not be used as for diagnostic or other medical purposes.
St John's Laboratory Ltd, Knowledge Dock Business Centre, University Way, London, E16 2RD | Tel: 0208 223 3081