

Anti-PFKP antibody (336-540) (STJ11103617)
STJ11103617

GENERAL INFORMATION

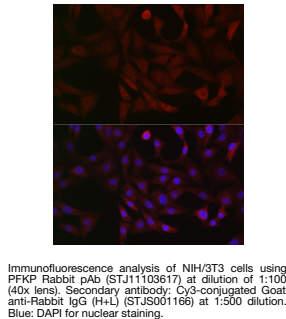
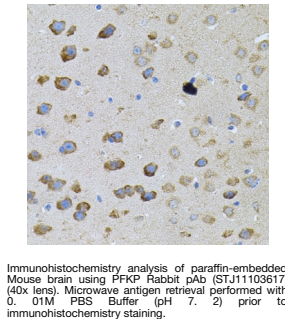
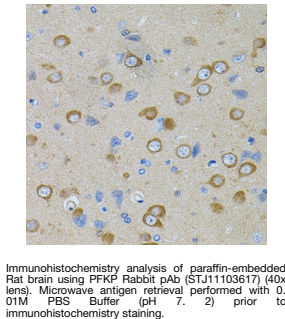
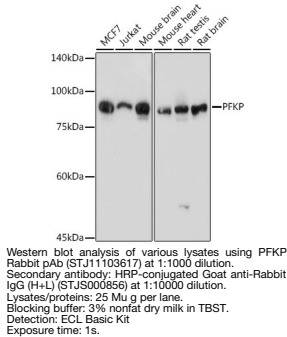
| | |
|--------------------------|-----------------------|
| Product Type | Primary antibodies |
| Short Description | |
| Applications | WB/IHC-P/IF/ICC/ELISA |
| Host/Source | Rabbit |
| Reactivity | Human/Mouse/Rat |

PRODUCT PROPERTIES

| | |
|----------------------|--|
| Clonality | Polyclonal |
| Clone ID | |
| Concentration | Lot specific |
| Conjugation | Unconjugated |
| Purification | Affinity purification |
| Dilution | WB:1:500-1:1000 |
| Range | IHC-P:1:100-1:200 IF/ICC:1:50-1:200 ELISA:Recommended starting concentration is 1 μ g/mL. Please optimize the concentration based on your specific assay requirements. |
| Formulation | PBS with 0.05% Proclin300, 50% Glycerol, pH 7.3. |
| Isotype | IgG |
| Storage | Store at -20°C for up to 1 year from the date of receipt, and avoid repeat freeze-thaw cycles. |
| Instruction | |

TARGET INFORMATION

| | |
|---------------------------|---|
| Gene ID | 5214 |
| Gene Symbol | PFKP |
| Uniprot ID | PFKAP_HUMAN |
| Immunogen | |
| Immunogen Region | 336-540 |
| Specificity | Recombinant fusion protein containing a sequence corresponding to amino acids 336-540 of human PFKP (NP_002618.1). |
| Immunogen Sequence | ATPDT PACVSLNGNHAVRL PLMECVQMTQDVQKAMDERR FQDAVRLGRSFAGNLNTYK RLAIKLPDDQIPKTN CNNAV INVGA PAAGMNAAVRS AVR V GIADGHRMLAIYDGF DGF AK GQIKEIGWTDVGGW TGGGS ILGTRVLP GKYLEE IATQM RTHSINAL LIIGGF EAYLGL LELSAAREKHEEFCVPMVMV PATVS |



This product is suitable for in-vitro studies under the RESEARCH USE ONLY [RUO] licence. This product must not be used as for diagnostic or other medical purposes.
St John's Laboratory Ltd, Knowledge Dock Business Centre, University Way, London, E16 2RD | Tel: 0208 223 3081