

Anti-RPS6KL1 antibody (1-549) (STJ11103615)

STJ11103615

GENERAL INFORMATION

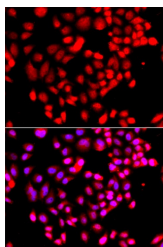
Product Type	Primary antibodies
Short Description	
Applications	WB/IF/ICC/ELISA
Host/Source	Rabbit
Reactivity	Human/Mouse/Rat

PRODUCT PROPERTIES

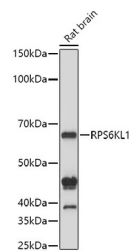
Clonality	Polyclonal
Clone ID	
Concentration	Lot specific
Conjugation	Unconjugated
Purification	Affinity purification
Dilution Range	WB:1:500-1:1000 IF/ICC:1:50-1:200 ELISA:Recommended starting concentration is 1 µg/mL. Please optimize the concentration based on your specific assay requirements.
Formulation	PBS with 0.09% Sodium Azide, 50% Glycerol, pH 7.3.
Isotype	IgG
Storage Instruction	Store at -20°C for up to 1 year from the date of receipt, and avoid repeat freeze-thaw cycles.

TARGET INFORMATION

Gene ID	83694
Gene Symbol	RPS6KL1
Uniprot ID	RPKL1_HUMAN
Immunogen	
Immunogen Region	1-549
Specificity	Recombinant fusion protein containing a sequence corresponding to amino acids 1-130 of human RPS6KL1 (NP_113652.2).
Immunogen Sequence	MSLVACECLPSPGLEPECS RARSQAHVYLEQIRNRVALG VPDMTKRDYLVDAATQIRLA LERDVSEDEYAAFNHYQNGV DVLLRGIHVDPNKERREAVK LKITKYLRRAEEIFNCHLQR PLSSGASPSA



Immunofluorescence analysis of A549 cells using RPS6KL1 antibody (STJ11103615). Blue: DAPI for nuclear staining.



Western blot analysis of extracts of Rat brain cells, using RPS6KL1 antibody (STJ11103615) at 1:1000 dilution. Secondary antibody: HRP Goat Anti-Rabbit IgG (H+L) (STJS000856) at 1:10000 dilution. Lysates/proteins: 25 µg per lane. Blocking buffer: 3% nonfat dry milk in TBST. Detection: ECL Basic Kit. Exposure time: 10s.

This product is suitable for in-vitro studies under the RESEARCH USE ONLY [RUO] licence. This product must not be used as for diagnostic or other medical purposes.
St John's Laboratory Ltd, Knowledge Dock Business Centre, University Way, London, E16 2RD | Tel: 0208 223 3081