

Anti-SRSF10 antibody (163-262) (STJ11103606)
STJ11103606

GENERAL INFORMATION

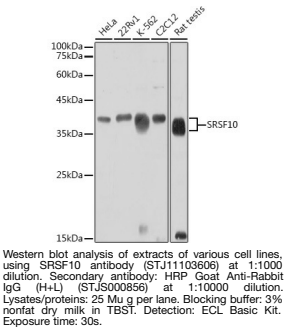
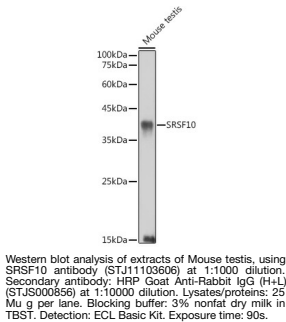
Product Type	Primary antibodies
Short Description	
Applications	WB/ELISA
Host/Source	Rabbit
Reactivity	Human/Mouse/Rat

PRODUCT PROPERTIES

Clonality	Polyclonal
Clone ID	
Concentration	Lot specific
Conjugation	Unconjugated
Purification	Affinity purification
Dilution Range	WB:1:500-1:1000 ELISA:Recommended starting concentration is 1 Mu g/mL. Please optimize the concentration based on your specific assay requirements.
Formulation	PBS with 0.05% Proclin300, 50% Glycerol, pH 7.3.
Isotype	IgG
Storage	Store at -20°C for up to 1 year from the date of receipt, and avoid repeat freeze-thaw cycles.
Instruction	

TARGET INFORMATION

Gene ID	10772
Gene Symbol	SRSF10
Uniprot ID	SRS10_HUMAN
Immunogen	
Immunogen Region	163-262
Specificity	A synthetic peptide corresponding to a sequence within amino acids 163-262 of human SRSF10 (NP_473357.1).
Immunogen Sequence	DRFKHRNRSFSRSKSNRSR SKSQPKKEMKAKSRSRSASH TKTRGTSKTDKTHYKSGSR YEKESRKKEPPRSKSQSRSQ SRSRSKRSRSWTSPKSSGH



This product is suitable for in-vitro studies under the RESEARCH USE ONLY [RUO] licence. This product must not be used as for diagnostic or other medical purposes.
St John's Laboratory Ltd, Knowledge Dock Business Centre, University Way, London, E16 2RD | Tel: 0208 223 3081