

## Anti-PERP antibody (94-193) [S3MR] (STJ11103593)

STJ11103593

### GENERAL INFORMATION

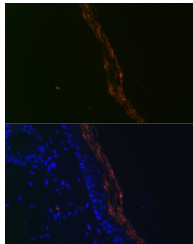
<b>Product Type</b>	Primary antibodies
<b>Short Description</b>	
<b>Applications</b>	WB/IHC-P/IF/ICC/ELISA
<b>Host/Source</b>	Rabbit
<b>Reactivity</b>	Human/Mouse/Rat

### PRODUCT PROPERTIES

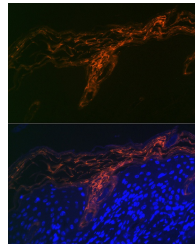
<b>Clonality</b>	Monoclonal
<b>Clone ID</b>	S3MR
<b>Concentration</b>	Lot specific
<b>Conjugation</b>	Unconjugated
<b>Purification</b>	Affinity purification
<b>Dilution Range</b>	WB:1:1000-1:6000 IHC-P:1:50-1:200 IF/ICC:1:100-1:400 ELISA:Recommended starting concentration is 1 µg/mL. Please optimize the concentration based on your specific assay requirements.
<b>Formulation</b>	PBS with 0.02% Sodium Azide, 0.05% BSA, 50% Glycerol, pH 7.3.
<b>Isotype</b>	IgG
<b>Storage Instruction</b>	Store at -20°C for up to 1 year from the date of receipt, and avoid repeat freeze-thaw cycles.

### TARGET INFORMATION

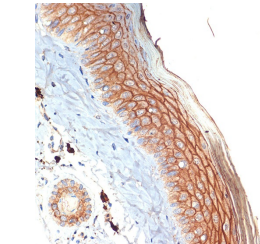
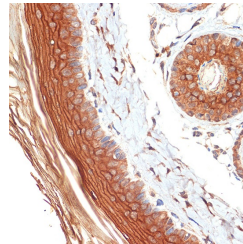
<b>Gene ID</b>	64065
<b>Gene Symbol</b>	PERP
<b>Uniprot ID</b>	PERP_HUMAN
<b>Immunogen</b>	
<b>Immunogen Region</b>	94-193
<b>Specificity</b>	A synthetic peptide corresponding to a sequence within amino acids 94-193 of human PERP (Q96FX8).
<b>Immunogen Sequence</b>	LSFFALCGPQMLVFLRVIGG LLALAAVFQIISLVYIPVKY TQFTLHANPAVTYIYNWAY GFGWAATILIGCAFFCCCL PNYEDDLLGNAKPRYFYTSA



Immunofluorescence analysis of mouse skin cells using PERP Rabbit monoclonal antibody (STJ11103593) at dilution of 1:100 (40x lens). Blue: DAPI for nuclear staining.



Immunofluorescence analysis of human skin cells using PERP Rabbit monoclonal antibody (STJ11103593) at dilution of 1:100 (40x lens). Blue: DAPI for nuclear staining.



Immunohistochemistry analysis of paraffin-embedded rat skin using PERP Rabbit monoclonal antibody (STJ11103593) at dilution of 1:100 (40x lens). Perform microwave antigen retrieval with 10 mM Tris/EDTA buffer pH 9.0 before commencing with immunohistochemistry staining protocol.