

Anti-PD-1/CD279 antibody (21-288) (STJ11103588)
STJ11103588

GENERAL INFORMATION

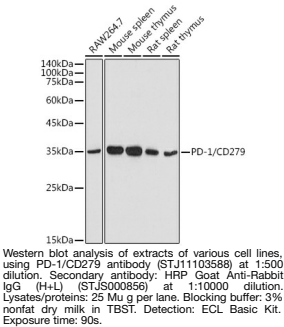
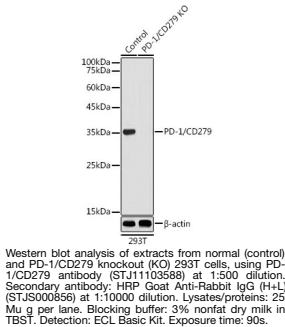
Product Type	Primary antibodies
Short Description	
Applications	WB/ELISA
Host/Source	Rabbit
Reactivity	Human/Mouse/Rat

PRODUCT PROPERTIES

Clonality	Polyclonal
Clone ID	
Concentration	Lot specific
Conjugation	Unconjugated
Purification	Affinity purification
Dilution	WB:1:100-1:500
Range	ELISA:Recommended starting concentration is 1 Mu g/mL. Please optimize the concentration based on your specific assay requirements.
Formulation	PBS with 0.05% Proclin300, 50% Glycerol, pH 7.3.
Isotype	IgG
Storage	Store at-20°C for up to 1 year from the date of receipt, and avoid repeat freeze-thaw cycles.
Instruction	

TARGET INFORMATION

Gene ID	5133
Gene Symbol	PDCD1
Uniprot ID	PDCD1_HUMAN
Immunogen	
Immunogen Region	21-288
Specificity	Recombinant fusion protein containing a sequence corresponding to amino acids 21-170 of human PD-1/CD279 (NP_005009.2). PGWFLDSPDRPWNPPTFSPA LLVVTGEGDNATFTCSFSNTS ESFVLNWYRMSPSNQTDKLA AFPEDRSQPGQDCRFRTVL
Immunogen Sequence	PNGRDFHMSVVRARRNDSTG YLCGAISLAPKAQIKESLRA ELRVTERRAEVPTAHPSPSP RPAGQFQTLV



This product is suitable for in-vitro studies under the RESEARCH USE ONLY [RUO] licence. This product must not be used as for diagnostic or other medical purposes.
St John's Laboratory Ltd, Knowledge Dock Business Centre, University Way, London, E16 2RD | Tel: 0208 223 3081