

Anti-CHMP6 antibody (111-200) (STJ11103583)

STJ11103583

GENERAL INFORMATION

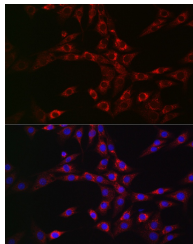
Product Type	Primary antibodies
Short Description	
Applications	WB/IF/ICC/ELISA
Host/Source	Rabbit
Reactivity	Human/Mouse

PRODUCT PROPERTIES

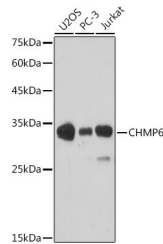
Clonality	Polyclonal
Clone ID	
Concentration	Lot specific
Conjugation	Unconjugated
Purification	Affinity purification
Dilution Range	WB:1:500-1:1000 IF/ICC:1:50-1:200 ELISA:Recommended starting concentration is 1 Mu g/mL. Please optimize the concentration based on your specific assay requirements.
Formulation	PBS with 0.05% Proclin300, 50% Glycerol, pH 7.3.
Isotype	IgG
Storage Instruction	Store at -20°C for up to 1 year from the date of receipt, and avoid repeat freeze-thaw cycles.

TARGET INFORMATION

Gene ID	79643
Gene Symbol	CHMP6
Uniprot ID	CHMP6_HUMAN
Immunogen	
Immunogen Region	111-200
Specificity	Recombinant fusion protein containing a sequence corresponding to amino acids 111-200 of human CHMP6 (NP_078867.2). LNKMHQVMSIEEVERILDET QEAVEYQRQIDELLAGSFTQ EDEDAILEELSAITQEIEL PEVPSEPLPEKIPENVPVKA
Immunogen Sequence	RPRQAELVAA



Immunofluorescence analysis of NIH/3T3 cells using CHMP6 Rabbit polyclonal antibody (STJ11103583) at dilution of 1:100 (40x lens). Blue: DAPI for nuclear staining.



Western blot analysis of extracts of various cell lines, using CHMP6 antibody (STJ11103583) at 1:1000 dilution. Secondary antibody: HRP Goat Anti-Rabbit IgG (H+L) (STJ5000656) at 1:10000 dilution. Lysates/proteins: 25 Mu g per lane. Blocking buffer: 3% nonfat dry milk in TBST. Detection: ECL Basic Kit. Exposure time: 90s.

This product is suitable for in-vitro studies under the RESEARCH USE ONLY [RUO] licence. This product must not be used as for diagnostic or other medical purposes.
St John's Laboratory Ltd, Knowledge Dock Business Centre, University Way, London, E16 2RD | Tel: 0208 223 3081