

## Anti-CD3G antibody (83-182) [S1MR] (STJ11103551)

STJ11103551

### GENERAL INFORMATION

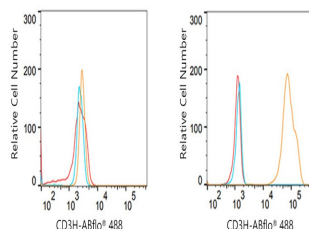
<b>Product Type</b>	Primary antibodies
<b>Short Description</b>	
<b>Applications</b>	WB/IHC-P/IF/ICC/FC/ELISA
<b>Host/Source</b>	Rabbit
<b>Reactivity</b>	Human/Mouse/Rat

### PRODUCT PROPERTIES

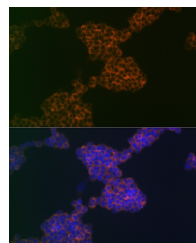
<b>Clonality</b>	Monoclonal
<b>Clone ID</b>	S1MR
<b>Concentration</b>	Lot specific
<b>Conjugation</b>	Unconjugated
<b>Purification</b>	Affinity purification
<b>Dilution Range</b>	WB:1:500-1:1000 IHC-P:1:50-1:200 IF/ICC:1:50-1:200 FC:1:50-1:200 ELISA:Recommended starting concentration is 1 Mu g/mL. Please optimize the concentration based on your specific assay requirements.
<b>Formulation</b>	PBS with 0.02% Sodium Azide, 0.05% BSA, 50% Glycerol, pH 7.3.
<b>Isotype</b>	IgG
<b>Storage</b>	Store at -20°C for up to 1 year from the date of receipt, and avoid repeat freeze-thaw cycles.
<b>Instruction</b>	

### TARGET INFORMATION

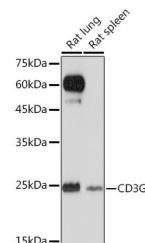
<b>Gene ID</b>	917
<b>Gene Symbol</b>	CD3G
<b>Uniprot ID</b>	CD3G_HUMAN
<b>Immunogen</b>	
<b>Immunogen Region</b>	83-182
<b>Specificity</b>	A synthetic peptide corresponding to a sequence within amino acids 83-182 of human CD3G (P09693).
<b>Immunogen Sequence</b>	GMVQCKGSGNKSPLQVYYR MCQNCIELNAATISGFLFAE IVSIFVLAVGVYFIAGQDGV RQSRASDKQTLLPNDQLYQP LKDREDDQYSHLQGNQLRRN



Flow cytometry: 1X10<sup>6</sup> Raji cells (negative control, left) and Jurkat cells (right) were intracellularly-stained with CD3G Rabbit monoclonal antibody (STJ11103551, 2.5 Mu g/mL, orange line) or ABR04 488 Rabbit IgG isotype control (2.5 Mu g/mL, blue line). Non-fluorescently stained cells were used as blank control (red line).



Immunofluorescence analysis of Jurkat cells using CD3G Rabbit monoclonal antibody (STJ11103551) at dilution of 1:100 (40x lens). Blue: DAPI for nuclear staining.



Western blot analysis of extracts of various cell lines, using CD3G Rabbit monoclonal antibody (STJ11103551) at 1:1000 dilution. Secondary antibody: HRP Goat Anti-Rabbit IgG (H+L) (STJS000856) at 1:10000 dilution. Lysates/proteins: 25 Mu g per lane. Blocking buffer: 3% nonfat dry milk in TBST. Detection: ECL Basic Kit. Exposure time: 120s.

This product is suitable for in-vitro studies under the RESEARCH USE ONLY [RUO] licence. This product must not be used as for diagnostic or other medical purposes.

St John's Laboratory Ltd, Knowledge Dock Business Centre, University Way, London, E16 2RD | Tel: 0208 223 3081