

Anti-CENPC antibody (380-520) [S3MR] (STJ11103543)

STJ11103543

GENERAL INFORMATION

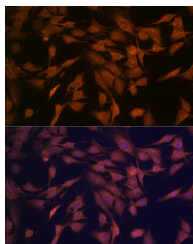
Product Type	Primary antibodies
Short Description	
Applications	WB/IF/ICC/ELISA
Host/Source	Rabbit
Reactivity	Human/Rat

PRODUCT PROPERTIES

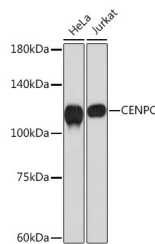
Clonality	Monoclonal
Clone ID	S3MR
Concentration	Lot specific
Conjugation	Unconjugated
Purification	Affinity purification
Dilution	WB:1:500-1:2000
Range	IF/CC:1:50-1:200
	ELISA:Recommended starting concentration is 1 Mu g/mL. Please optimize the concentration based on your specific assay requirements.
Formulation	PBS with 0.02% Sodium Azide, 0.05% BSA, 50% Glycerol, pH 7.3.
Isotype	IgG
Storage Instruction	Store at -20°C for up to 1 year from the date of receipt, and avoid repeat freeze-thaw cycles.

TARGET INFORMATION

Gene ID	1060
Gene Symbol	CENPC
Uniprot ID	CENPC_HUMAN
Immunogen	
Immunogen Region	380-520
Specificity	Recombinant fusion protein containing a sequence corresponding to amino acids 380-520 of human CENPC (Q03188).
Immunogen Sequence	VLDTSYALIGETVNNYRSTK YEMYSKNAEKPSRSKRTIKQ KQRRKFMAKPAEEQLDVGQS KDENIHTSHITQDEFQRNSD RNMEEHEEMGNDVCVSKKQMP PVGSKKKSSTRKDKEESKKKR FSESSEKNKLVPEEVTSTVTK S



Immunofluorescence analysis of C6 cells using CENPC Rabbit monoclonal antibody (STJ11103543) at dilution of 1:100 (40x lens). Blue: DAPI for nuclear staining.



Western blot analysis of extracts of various cell lines, using CENPC Rabbit monoclonal antibody (STJ11103543) at 1:1000 dilution. Secondary antibody: HRP Goat Anti-Rabbit IgG (H+L) (STJS000856) at 1:10000 dilution. Lysates/proteins: 25 Mu g per lane. Blocking buffer: 3% nonfat dry milk in TBST. Detection: ECL Basic Kit. Exposure time: 30s.

This product is suitable for in-vitro studies under the RESEARCH USE ONLY [RUO] licence. This product must not be used as for diagnostic or other medical purposes.
St John's Laboratory Ltd, Knowledge Dock Business Centre, University Way, London, E16 2RD | Tel: 0208 223 3081