

Anti-KMT1B/SUV39H2 antibody (311-410) [S1MR] (STJ11103531)

STJ11103531

GENERAL INFORMATION

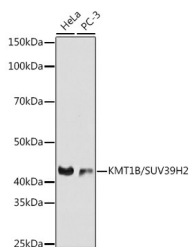
Product Type	Primary antibodies
Short Description	
Applications	WB/ELISA
Host/Source	Rabbit
Reactivity	Human

PRODUCT PROPERTIES

Clonality	Monoclonal
Clone ID	S1MR
Concentration	Lot specific
Conjugation	Unconjugated
Purification	Affinity purification
Dilution Range	WB:1:500-1:1000 ELISA:Recommended starting concentration is 1 Mu g/mL. Please optimize the concentration based on your specific assay requirements.
Formulation	PBS with 0.02% Sodium Azide, 0.05% BSA, 50% Glycerol, pH 7.3.
Isotype	IgG
Storage Instruction	Store at -20°C for up to 1 year from the date of receipt, and avoid repeat freeze-thaw cycles.

TARGET INFORMATION

Gene ID	79723
Gene Symbol	SUV39H2
Uniprot ID	SUV92_HUMAN
Immunogen	
Immunogen	311-410
Region	
Specificity	A synthetic peptide corresponding to a sequence within amino acids 311-410 of human KMT1B/SUV39H2 (Q9H5I1).
Immunogen	ESDEFTVDAARYGNVSHFVN HSCDPNLQVFNVDNLNLTDR LPRIALFSTRITINAGEELTF DYQMKGSGDISSDSIDHSPA
Sequence	KKRVRTVCKCGAVTCRGYLN



Western blot analysis of extracts of various cell lines, using KMT1B/ SUV39H2 antibody (STJ11103531) at 1:1000 dilution. Secondary antibody: HRP Goat Anti-Rabbit IgG (H+L) (STJSD00856) at 1:10000 dilution. Lysates/proteins: 25 Mu g per lane. Blocking buffer: 3% nonfat dry milk in TBST. Detection: ECL Basic Kit. Exposure time: 30s.

This product is suitable for in-vitro studies under the RESEARCH USE ONLY [RUO] licence. This product must not be used as for diagnostic or other medical purposes.
St John's Laboratory Ltd, Knowledge Dock Business Centre, University Way, London, E16 2RD | Tel: 0208 223 3081