

Anti-Complement C4A antibody (940-1237) [S2MR] (STJ11103522)
STJ11103522

GENERAL INFORMATION

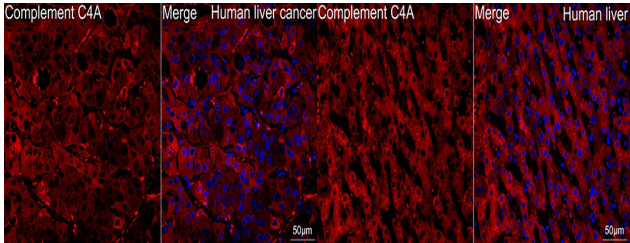
Product Type	Primary antibodies
Short Description	
Applications	WB/IF/ICC/ELISA
Host/Source	Rabbit
Reactivity	Human

PRODUCT PROPERTIES

Clonality	Monoclonal
Clone ID	S2MR
Concentration	Lot specific
Conjugation	Unconjugated
Purification	Affinity purification
Dilution Range	WB:1:500-1:1000 IF/ICC:1:50-1:200
	ELISA:Recommended starting concentration is 1 Mu g/mL. Please optimize the concentration based on your specific assay requirements.
Formulation	PBS with 0.02% Sodium Azide, 0.05% BSA, 50% Glycerol, pH 7.3.
Isotype	IgG
Storage Instruction	Store at -20°C for up to 1 year from the date of receipt, and avoid repeat freeze-thaw cycles.

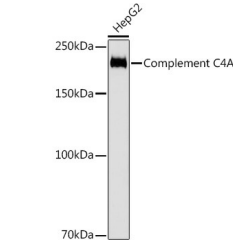
TARGET INFORMATION

Gene ID	720/721
Gene Symbol	C4A
Uniprot ID	CO4A_HUMAN
Immunogen	
Immunogen Region	940-1237
Specificity	Recombinant fusion protein containing a sequence corresponding to amino acids 940-1237 of human Complement C4A (P0C0L4).
Immunogen Sequence	HREELVYELNPLDHRGRTL EIPGNSDPNMIPDGFNSYVR VTASDPLDTLGSEGALSPGG VASLLRLPRGCGEQTMIIYLA PTLAASRYLDKTEQWSTLPP ETKDHAVDLIQGYMRIQQF RKADGSYAAWLSRDSSTWLT AFVLKVLSLAQEQVGGSP EK LQETSNWLLSQQQADGSFQD PCPVLDRSMQGGGLVGNDET V ALTAFTVIALHHGLAVFQDE GAEPLKQRVEASISKANSF



Confocal imaging of A paraffin-embedded Human liver cancer tissue using A Complement C4A Rabbit monoclonal antibody (STJ11103522, dilution 1:100) followed by a further incubation with Cy3 Goat Anti-Rabbit IgG (H+L) (dilution 1:500) (Red). DAPI was used for nuclear staining (Blue). Objective: 40x. Perform high pressure antigen retrieval with 0.01 M citrate buffer (pH 6.0) prior to IF staining.

Confocal imaging of A paraffin-embedded Human liver tissue using A Complement C4A Rabbit monoclonal antibody (STJ11103522, dilution 1:100) followed by a further incubation with Cy3 Goat Anti-Rabbit IgG (H+L) (dilution 1:500) (Red). DAPI was used for nuclear staining (Blue). Objective: 40x. Perform high pressure antigen retrieval with 0.01 M citrate buffer (pH 6.0) prior to IF staining.



Western blot analysis of lysates from HepG2 cells, using Complement C4A Rabbit monoclonal antibody (STJ11103522) at 1:1000 dilution. Secondary antibody: HRP Goat Anti-Rabbit IgG (H+L) (STJS000856) at 1:10000 dilution. Lysates/proteins: 25 Mu g per lane. Blocking buffer: 3% nonfat dry milk in TBST. Detection: ECL Basic Kit. Exposure time: 3s.

This product is suitable for in-vitro studies under the RESEARCH USE ONLY [RUO] licence. This product must not be used as for diagnostic or other medical purposes.
St John's Laboratory Ltd, Knowledge Dock Business Centre, University Way, London, E16 2RD | Tel: 0208 223 3081