

Anti-Gli3 antibody (1301-1580) [S4MR] (STJ11103514)

STJ11103514

GENERAL INFORMATION

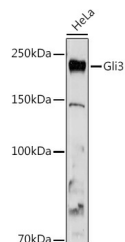
Product Type	Primary antibodies
Short Description	
Applications	WB/IF/ICC/ELISA
Host/Source	Rabbit
Reactivity	Human/Mouse/Rat

PRODUCT PROPERTIES

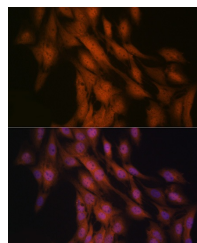
Clonality	Monoclonal
Clone ID	S4MR
Concentration	Lot specific
Conjugation	Unconjugated
Purification	Affinity purification
Dilution	WB:1:500-1:1000
Range	IF/CC:1:50-1:200
	ELISA:Recommended starting concentration is 1 μ g/mL. Please optimize the concentration based on your specific assay requirements.
Formulation	PBS with 0.02% Sodium Azide, 0.05% BSA, 50% Glycerol, pH 7.3.
Isotype	IgG
Storage Instruction	Store at -20°C for up to 1 year from the date of receipt, and avoid repeat freeze-thaw cycles.

TARGET INFORMATION

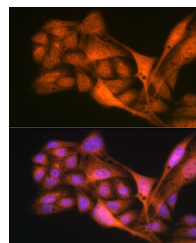
Gene ID	2737
Gene Symbol	GLI3
Uniprot ID	GLI3_HUMAN
Immunogen	
Immunogen Region	1301-1580
Specificity	Recombinant fusion protein containing a sequence corresponding to amino acids 1301-1580 of human Gli3 (P10071).
Immunogen Sequence	PNESAGSMVNGMQNDPVGG GYLAHQLLGDSMQHPGAGRP GQQLGQISATSHINYQGP ESCLPGAHGMSQPSSLAVV RGYQPCASFGGSRQAMP RD SLALQSGQLSDTSQTCTRVNG IKMEMKGQPHPLCSNLQNYSGQFYDQTVGFSQQDTKAGSF SISDASCLLQGTSAKNSSELL SPGANQVTSTVDSLDSHDLGVQIDFDAIIDDGDHSSLMS GALSPSIIQNLSSHSSRLT



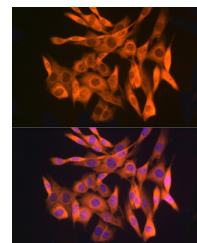
Western blot analysis of extracts of HeLa cells, using Gli3 antibody (STJ11103514) at 1:1000 dilution. Secondary antibody: HRP Goat Anti-rabbit IgG (H+L) (STJ5000856) at 1:10000 dilution. Lysates/proteins: 25 μ g per lane. Blocking buffer: 3% non-fat dry milk in TBST. Detection: ECL Basic Kit. Exposure time: 180s.



Immunofluorescence analysis of C6 cells using Gli3 rabbit monoclonal antibody (STJ11103514) at dilution of 1:100 (40x lens). Blue: DAPI for nuclear staining.



Immunofluorescence analysis of U-2 OS cells using Gli3 rabbit monoclonal antibody (STJ11103514) at dilution of 1:100 (40x lens). Blue: DAPI for nuclear staining.



Immunofluorescence analysis of NIH/3T3 cells using Gli3 rabbit monoclonal antibody (STJ11103514) at dilution of 1:100 (40x lens). Blue: DAPI for nuclear staining.

This product is suitable for in-vitro studies under the RESEARCH USE ONLY [RUO] licence. This product must not be used as for diagnostic or other medical purposes.
St John's Laboratory Ltd, Knowledge Dock Business Centre, University Way, London, E16 2RD | Tel: 0208 223 3081