

Anti-IL15RA antibody (167-267) (STJ11103511)

STJ11103511

GENERAL INFORMATION

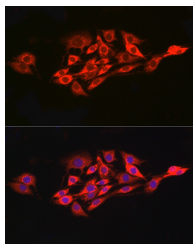
Product Type	Primary antibodies
Short Description	
Applications	WB/IF/ICC/ELISA
Host/Source	Rabbit
Reactivity	Human/Mouse/Rat

PRODUCT PROPERTIES

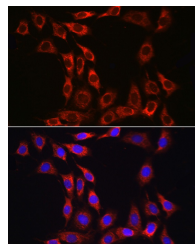
Clonality	Polyclonal
Clone ID	
Concentration	Lot specific
Conjugation	Unconjugated
Purification	Affinity purification
Dilution Range	WB:1:500-1:1000 IF/ICC:1:50-1:200 ELISA:Recommended starting concentration is 1 μ g/mL. Please optimize the concentration based on your specific assay requirements.
Formulation	PBS with 0.05% Proclin300, 50% Glycerol, pH 7.3.
Isotype	IgG
Storage	Store at -20°C for up to 1 year from the date of receipt, and avoid repeat freeze-thaw cycles.
Instruction	

TARGET INFORMATION

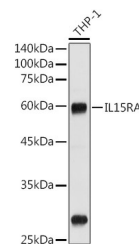
Gene ID	3601
Gene Symbol	IL15RA
Uniprot ID	I15RA_HUMAN
Immunogen	
Immunogen Region	167-267
Specificity	Recombinant fusion protein containing a sequence corresponding to amino acids 167-267 of human CD215/IL-15R alpha (NP_002180.1).
Immunogen Sequence	SHESHGTPSQTTAKNWELT ASASHQPPGVYPQGHSDTTV AISTSTVLLCGLSAVLLAC YLKSQRQTPPLASVEMEAMEA LPVTWGTSSRDEDLNCSSH L



Immunofluorescence analysis of PC-12 cells using CD215/IL-15R alpha Rabbit polyclonal antibody (STJ11103511) at dilution of 1:100 (40x lens). Blue: DAPI for nuclear staining.



Immunofluorescence analysis of NIH/3T3 cells using CD215/IL-15R alpha Rabbit polyclonal antibody (STJ11103511) at dilution of 1:100 (40x lens). Blue: DAPI for nuclear staining.



Western blot analysis of extracts of THP-1 cells, using CD215/IL-15R alpha antibody (STJ11103511) at 1:1000 dilution. Secondary antibody: HRP Goat Anti-Rabbit IgG (H+L) (STJ/S000856) at 1:10000 dilution. Lysates/proteins: 25 μ g per lane. Blocking buffer: 3% nonfat dry milk in TBST. Detection: ECL Basic Kit. Exposure time: 180s.