

Anti-WT1 antibody (60-250) [S4MR] (STJ11103494)
STJ11103494

GENERAL INFORMATION

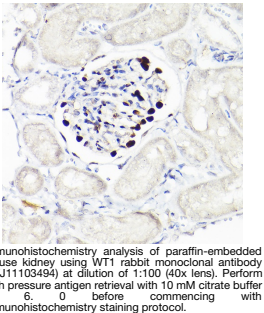
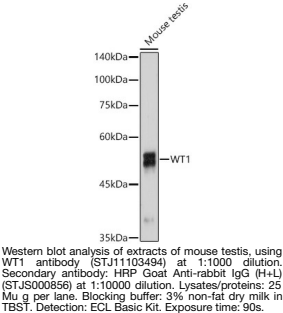
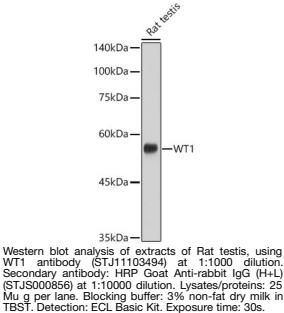
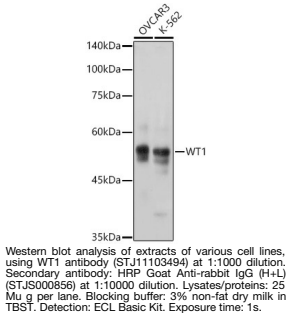
Product Type	Primary antibodies
Short Description	
Applications	WB/IHC-P/ELISA
Host/Source	Rabbit
Reactivity	Human/Mouse/Rat

PRODUCT PROPERTIES

Clonality	Monoclonal
Clone ID	S4MR
Concentration	Lot specific
Conjugation	Unconjugated
Purification	Affinity purification
Dilution	WB:1:1000-1:4000
Range	IHC-P:1:200-1:800
	ELISA:Recommended starting concentration is 1 Mu g/mL. Please optimize the concentration based on your specific assay requirements.
Formulation	PBS with 0.02% Sodium Azide, 0.05% BSA, 50% Glycerol, pH 7.3.
Isotype	IgG
Storage Instruction	Store at -20°C for up to 1 year from the date of receipt, and avoid repeat freeze-thaw cycles.

TARGET INFORMATION

Gene ID	7490
Gene Symbol	WT1
Uniprot ID	WT1_HUMAN
Immunogen	
Immunogen Region	60-250
Specificity	Recombinant fusion protein containing a sequence corresponding to amino acids 60-250 of human WT1 (P19544).
Immunogen Sequence	PPPPPPPPHSFIKQEPSWG GAEPHEEQCLSAFTVHFSGQ FTGTAGACRYGPFGPPPPSQ ASSGQARMFNPAPYLPSCLE SQPAIRNQGYSTVTFDGTPS YGHTPSHHAQFPNHSFKHE DPMGQQGSLGEQQYSVPPPV YGCHTPTDSC TGSQALLRT PYSSDNLQYMTSQLECMTWN QMNLGATLKGV



This product is suitable for in-vitro studies under the RESEARCH USE ONLY [RUO] licence. This product must not be used as for diagnostic or other medical purposes.
St John's Laboratory Ltd, Knowledge Dock Business Centre, University Way, London, E16 2RD | Tel: 0208 223 3081