

Anti-SRP54 antibody (400-504) [S1MR] (STJ11103481)

STJ11103481

GENERAL INFORMATION

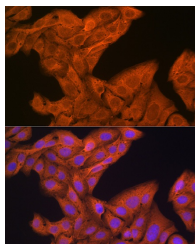
Product Type	Primary antibodies
Short Description	
Applications	WB/IF/ICC/ELISA
Host/Source	Rabbit
Reactivity	Human/Mouse/Rat

PRODUCT PROPERTIES

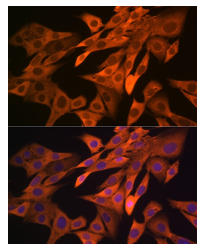
Clonality	Monoclonal
Clone ID	S1MR
Concentration	Lot specific
Conjugation	Unconjugated
Purification	Affinity purification
Dilution Range	WB:1:500-1:1000 IF/ICC:1:50-1:200 ELISA:Recommended starting concentration is 1 µg/mL. Please optimize the concentration based on your specific assay requirements.
Formulation	PBS with 0.02% Sodium Azide, 0.05% BSA, 50% Glycerol, pH 7.3.
Isotype	IgG
Storage Instruction	Store at -20°C for up to 1 year from the date of receipt, and avoid repeat freeze-thaw cycles.

TARGET INFORMATION

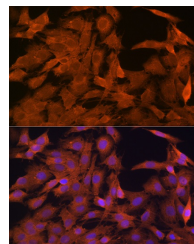
Gene ID	6729
Gene Symbol	SRP54
Uniprot ID	SRP54_HUMAN
Immunogen	
Immunogen Region	400-504
Specificity	A synthetic peptide corresponding to a sequence within amino acids 400-504 of human SRP54 (P61011).
Immunogen Sequence	PGRIQRVARSGVSTRDVQE LLTQYTKFAQMVKKMGIGK LFKGGDMSKNVSQSQMAKLN QQMAKMMDPRLVHHMGGMAG LQSMRQFQQGAAGNMKGMM GFNNM



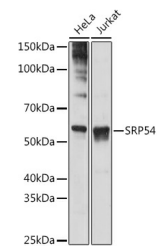
Immunofluorescence analysis of U-2 OS cells using SRP54 Rabbit monoclonal antibody (STJ11103481) at dilution of 1:100 (40x lens). Blue: DAPI for nuclear staining.



Immunofluorescence analysis of NIH-3T3 cells using SRP54 Rabbit monoclonal antibody (STJ11103481) at dilution of 1:100 (40x lens). Blue: DAPI for nuclear staining.



Immunofluorescence analysis of C6 cells using SRP54 Rabbit monoclonal antibody (STJ11103481) at dilution of 1:100 (40x lens). Blue: DAPI for nuclear staining.



Western blot analysis of extracts of various cell lines, using SRP54 antibody (STJ11103481) at 1:1000 dilution. Secondary antibody: HRP Goat Anti-Rabbit IgG (H+L) (STJS000856) at 1:10000 dilution. Lysates/proteins: 25 µg per lane. Blocking buffer: 3% nonfat dry milk in TBST. Detection: ECL Basic Kit. Exposure time: 1s.

This product is suitable for in-vitro studies under the RESEARCH USE ONLY [RUO] licence. This product must not be used as for diagnostic or other medical purposes.
St John's Laboratory Ltd, Knowledge Dock Business Centre, University Way, London, E16 2RD | Tel: 0208 223 3081