

Anti-Beta 1-Adrenergic Receptor antibody (350-450) (STJ11103471)

STJ11103471

GENERAL INFORMATION

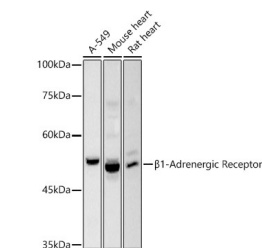
Product Type	Primary antibodies
Short Description	
Applications	WB/ELISA
Host/Source	Rabbit
Reactivity	Human/Mouse/Rat

PRODUCT PROPERTIES

Clonality	Polyclonal
Clone ID	
Concentration	Lot specific
Conjugation	Unconjugated
Purification	Affinity purification
Dilution Range	WB:1:500-1:1000 ELISA:Recommended starting concentration is 1 Mu g/mL. Please optimize the concentration based on your specific assay requirements.
Formulation	PBS with 0.09% Sodium Azide, 50% Glycerol, pH 7.3.
Isotype	IgG
Storage Instruction	Store at -20°C for up to 1 year from the date of receipt, and avoid repeat freeze-thaw cycles.

TARGET INFORMATION

Gene ID	153
Gene Symbol	ADRB1
Uniprot ID	ADRB1_HUMAN
Immunogen	
Immunogen Region	350-450
Specificity	A synthetic peptide corresponding to a sequence within amino acids 350-450 of human Beta 1-Adrenergic Receptor (NP_000675.1).
Immunogen Sequence	HRELVPDRLFVFFNWLGYN SAFNPPIYCRSPDFRKAQFG LLCCARRAARRRHATHGDRP RASGCLARPGPPSPGAASD DDDDVVGATPPARLLEPWA G



Western blot analysis of various lysates using Beta 1-Adrenergic Receptor Rabbit polyclonal antibody (STJ11103471) at 1:1000 dilution. Secondary antibody: HRP-Goat Anti-Rabbit IgG (H+L) (STJS000856) at 1:10000 dilution. Lysates/proteins: 25 Mu g per lane. Blocking buffer: 3% nonfat dry milk in TBST. Detection: ECL Basic Kit. Exposure time: 3s.

This product is suitable for in-vitro studies under the RESEARCH USE ONLY [RUO] licence. This product must not be used as for diagnostic or other medical purposes.
St John's Laboratory Ltd, Knowledge Dock Business Centre, University Way, London, E16 2RD | Tel: 0208 223 3081