

Anti-Timm22 antibody (19-121) (STJ11103470)

STJ11103470

GENERAL INFORMATION

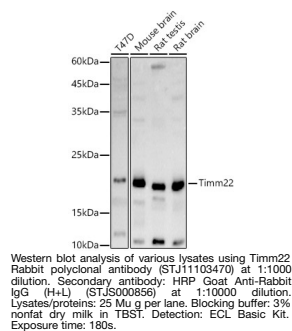
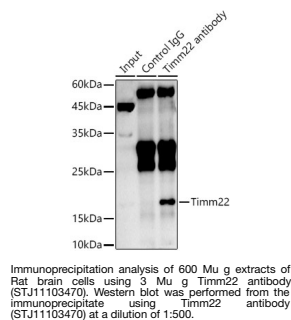
Product Type	Primary antibodies
Short Description	
Applications	WB/IP/ELISA
Host/Source	Rabbit
Reactivity	Human/Mouse/Rat

PRODUCT PROPERTIES

Clonality	Polyclonal
Clone ID	
Concentration	Lot specific
Conjugation	Unconjugated
Purification	Affinity purification
Dilution Range	WB:1:500-1:1000 IP:0.5 Mu g-4 Mu g antibody for 400 Mu g-600 Mu g extracts of whole cells ELISA:Recommended starting concentration is 1 Mu g/mL. Please optimize the concentration based on your specific assay requirements.
Formulation	PBS with 0.05% Proclin300, 50% Glycerol, pH 7.3.
Isotype	IgG
Storage	Store at -20°C for up to 1 year from the date of receipt, and avoid repeat freeze-thaw cycles.
Instruction	

TARGET INFORMATION

Gene ID	56322
Gene Symbol	Timm22
Uniprot ID	TIM22_MOUSE
Immunogen	
Immunogen Region	19-121
Specificity	Recombinant fusion protein containing a sequence corresponding to amino acids 19-121 of mouse Timm22 (NP_062792.2).
Immunogen Sequence	AEAPLQYSLLLQYLVGDKRQ PRLLPGSLGGIPSPAKSEE QKMIERAMESCAFKAVLACV GGFVLGGAFGIFTAGIDTNV GFDPKDPYRTPTAKEVLKDM GQR



This product is suitable for in-vitro studies under the RESEARCH USE ONLY [RUO] licence. This product must not be used as for diagnostic or other medical purposes.
St John's Laboratory Ltd, Knowledge Dock Business Centre, University Way, London, E16 2RD | Tel: 0208 223 3081