

Anti-Fluorescein FITC antibody [S5MR] (STJ11103455)

STJ11103455

GENERAL INFORMATION

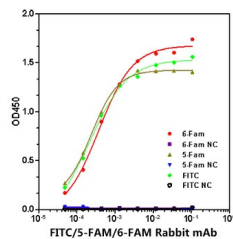
Product Type	Primary antibodies
Short Description	
Applications	WB/ELISA
Host/Source	Rabbit
Reactivity	Species independent

PRODUCT PROPERTIES

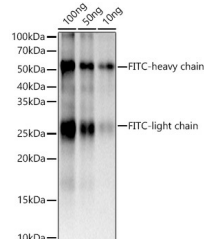
Clonality	Monoclonal
Clone ID	S5MR
Concentration	Lot specific
Conjugation	Unconjugated
Purification	Affinity purification
Dilution Range	WB:1:2000-1:12000 ELISA:1:500-1:2000
Formulation	PBS with 0.05% Proclin300, 0.05% BSA, 50% Glycerol, pH 7.3.
Isotype	IgG
Storage Instruction	Store at -20°C for up to 1 year from the date of receipt, and avoid repeat freeze-thaw cycles.

TARGET INFORMATION

Gene ID	
Gene Symbol	
Uniprot ID	
Immunogen	FITC conjugated to K LH
Immunogen Region	
Specificity	FITC
Immunogen Sequence	FITC conjugated to K LH



Immobilized biotin-6-Fam, biotin-5-Fam, biotin-FITC, at 1 μg/mL (25 μg/well), of which EC50 ranges are 0.27-0.54 ng/mL, 0.18-0.31 ng/mL and 0.12-0.39 ng/mL, can bind anti-6-Fam/5-Fam/FITC monoclonal antibody (STJ11103455), respectively.



Western blot analysis using FITC/5-FAM/6-FAM rabbit monoclonal antibody (STJ11103455) to detect FITC conjugated goat IgG. Secondary antibody: HRP Goat Anti-rabbit IgG (H+L) (STJS000856) at 1:10000 dilution. Lysates/proteins: 25 μg per lane. Blocking buffer: 3% non-fat dry milk in TBST. Detection: ECL Basic Kit. Exposure time: 1s.

This product is suitable for in-vitro studies under the RESEARCH USE ONLY [RUO] licence. This product must not be used as for diagnostic or other medical purposes.
St John's Laboratory Ltd, Knowledge Dock Business Centre, University Way, London, E16 2RD | Tel: 0208 223 3081