

Anti-SARM1 antibody (625-724) (STJ11103379)
STJ11103379

GENERAL INFORMATION

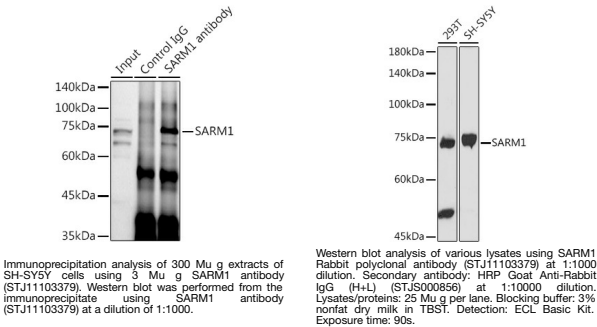
Product Type	Primary antibodies
Short Description	
Applications	WB/IP/ELISA
Host/Source	Rabbit
Reactivity	Human

PRODUCT PROPERTIES

Clonality	Polyclonal
Clone ID	
Concentration	Lot specific
Conjugation	Unconjugated
Purification	Affinity purification
Dilution Range	WB:1:500-1:1000 IP:0.5 Mu g-4 Mu g antibody for 200 Mu g-400 Mu g extracts of whole cells ELISA:Recommended starting concentration is 1 Mu g/mL. Please optimize the concentration based on your specific assay requirements.
Formulation	PBS with 0.05% Proclin300, 50% Glycerol, pH 7.3.
Isotype	IgG
Storage Instruction	Store at -20°C for up to 1 year from the date of receipt, and avoid repeat freeze-thaw cycles.

TARGET INFORMATION

Gene ID	23098
Gene Symbol	SARM1
Uniprot ID	SARM1_HUMAN
Immunogen	
Immunogen Region	625-724
Specificity	A synthetic peptide corresponding to a sequence within amino acids 625-724 of human SARM1 (NP_055892.2).
Immunogen Sequence	ALDKCMQDHDCKDWHKEIV TALSCGKNIVPIIDGFEWPE PQVLPEDMQAVLTFNGIKWS HEYQEATIEKIIRFLQGRSS RDSSAGSDTSLEGAAPMGPT



This product is suitable for in-vitro studies under the RESEARCH USE ONLY [RUO] licence. This product must not be used as for diagnostic or other medical purposes.
St John's Laboratory Ltd, Knowledge Dock Business Centre, University Way, London, E16 2RD | Tel: 0208 223 3081