

Anti-OTULIN antibody (50-352) (STJ11103341)

STJ11103341

GENERAL INFORMATION

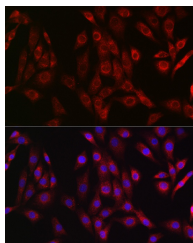
| | |
|--------------------------|--------------------|
| Product Type | Primary antibodies |
| Short Description | |
| Applications | WB/IF/ICC/ELISA |
| Host/Source | Rabbit |
| Reactivity | Human/Mouse/Rat |

PRODUCT PROPERTIES

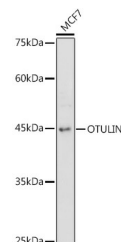
| | |
|----------------------|---|
| Clonality | Polyclonal |
| Clone ID | |
| Concentration | Lot specific |
| Conjugation | Unconjugated |
| Purification | Affinity purification |
| Dilution | WB:1:500-1:1000 |
| Range | IF/CC:1:50-1:200 |
| | ELISA:Recommended starting concentration is 1 Mu g/mL. Please optimize the concentration based on your specific assay requirements. |
| Formulation | PBS with 0.05% Proclin300, 50% Glycerol, pH 7.3. |
| Isotype | IgG |
| Storage | Store at -20°C for up to 1 year from the date of receipt, and avoid repeat freeze-thaw cycles. |
| Instruction | |

TARGET INFORMATION

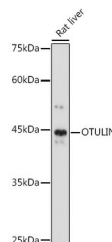
| | |
|---------------------------|--|
| Gene ID | 90268 |
| Gene Symbol | OTULIN |
| Uniprot ID | OTUL_HUMAN |
| Immunogen | |
| Immunogen Region | 50-352 |
| Specificity | Recombinant fusion protein containing a sequence corresponding to amino acids 50-352 of human OTULIN (NP_612357.4). |
| Immunogen Sequence | EHEEDMYRAADEIEKEKELL IHERGASEPRLSVAPEMDIM DYCKKEWRGNTQKATCMKMG YEEVSQKFTSIRRVGRDNYC ALRATLFGAMSQAVGLPPWL QDPELMMLPEKLISKYNWIK QWKLGLKFDGKNEDLVDKIK ESLTLRKKWAGLAEMRTAE ARQIACDELFTNEAEEYSY EAVKFLMLNRAIELYNDKEK GKEVPFFSVLLFARDTSNDP GQLLRNHLNQVGHTGGLEQ |



Immunofluorescence analysis of NIH/3T3 cells using OTULIN Rabbit polyclonal antibody (STJ11103341) at dilution of 1:50 (40x lens). Blue: DAPI for nuclear staining.



Western blot analysis of extracts of MCF7 cells, using OTULIN antibody (STJ11103341) at 1:1000 dilution. Secondary antibody: HRP Goat Anti-Rabbit IgG (H+L) (STJ3000856) at 1:10000 dilution. Lysates/proteins: 25 Mu g per lane. Blocking buffer: 3% nonfat dry milk in TBST. Detection: ECL Basic Kit. Exposure time: 180s.



Western blot analysis of extracts of Rat liver, using OTULIN antibody (STJ11103341) at 1:1000 dilution. Secondary antibody: HRP Goat Anti-Rabbit IgG (H+L) (STJ3000856) at 1:10000 dilution. Lysates/proteins: 25 Mu g per lane. Blocking buffer: 3% nonfat dry milk in TBST. Detection: ECL Basic Kit. Exposure time: 60s.

This product is suitable for in-vitro studies under the RESEARCH USE ONLY [RUO] licence. This product must not be used as for diagnostic or other medical purposes.
St John's Laboratory Ltd, Knowledge Dock Business Centre, University Way, London, E16 2RD | Tel: 0208 223 3081