

Anti-TASL antibody (96-196) (STJ11103338)

STJ11103338

GENERAL INFORMATION

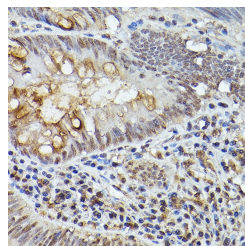
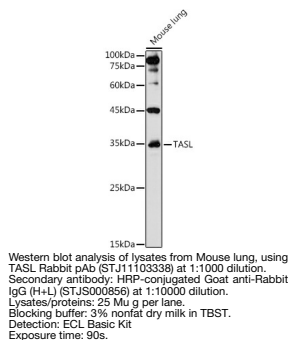
Product Type	Primary antibodies
Short Description	
Applications	WB/IHC-P/ELISA
Host/Source	Rabbit
Reactivity	Human/Mouse

PRODUCT PROPERTIES

Clonality	Polyclonal
Clone ID	
Concentration	Lot specific
Conjugation	Unconjugated
Purification	Affinity purification
Dilution Range	WB:1:500-1:1000 IHC-P:1:50-1:200 ELISA:Recommended starting concentration is 1 Mu g/mL. Please optimize the concentration based on your specific assay requirements.
Formulation	PBS with 0.09% Sodium Azide, 50% Glycerol, pH 7.3.
Isotype	IgG
Storage Instruction	Store at -20°C for up to 1 year from the date of receipt, and avoid repeat freeze-thaw cycles.

TARGET INFORMATION

Gene ID	80231
Gene Symbol	TASL
Uniprot ID	TASL_HUMAN
Immunogen	
Immunogen Region	96-196
Specificity	Recombinant fusion protein containing a sequence corresponding to amino acids 96-196 of human TASL (NP_079435.1).
Immunogen Sequence	NLAAVEICRDASRETYLVPS SCKSICKNYNDLQIAGGQVM AINSVTDFPSESSFYEGPL LKSSEIPLPMEDSISTQPSD FPQKPIQRYSSYWRTSIKE K



Immunohistochemistry analysis of paraffin-embedded Human colon carcinoma using TASL Rabbit pAb (STJ11103338) at dilution of 1:50 (40x lens). High pressure antigen retrieval performed with 0.01M Citrate Buffer (pH 6.0) prior to immunohistochemistry staining.