

Anti-ICAM1 antibody (120-320) (STJ11103325)
STJ11103325

GENERAL INFORMATION

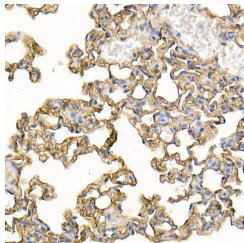
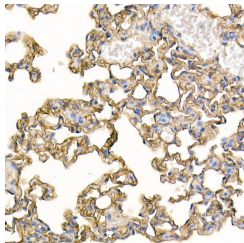
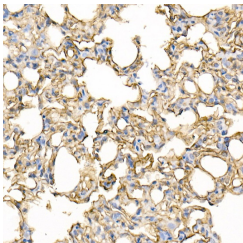
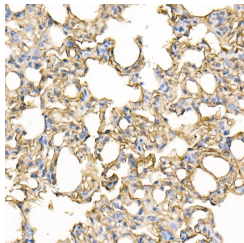
Product Type	Primary antibodies
Short Description	
Applications	WB/IHC-P/ELISA
Host/Source	Rabbit
Reactivity	Human/Mouse/Rat

PRODUCT PROPERTIES

Clonality	Polyclonal
Clone ID	
Concentration	Lot specific
Conjugation	Unconjugated
Purification	Affinity purification
Dilution	WB:1:500-1:1000
Range	IHC-P:1:50-1:200 ELISA:Recommended starting concentration is 1 µg/mL. Please optimize the concentration based on your specific assay requirements.
Formulation	PBS with 0.09% Sodium Azide, 50% Glycerol, pH 7.3.
Isotype	IgG
Storage Instruction	Store at -20°C for up to 1 year from the date of receipt, and avoid repeat freeze-thaw cycles.

TARGET INFORMATION

Gene ID	15894
Gene Symbol	Icam1
Uniprot ID	ICAM1_MOUSE
Immunogen	
Immunogen Region	120-320
Specificity	Recombinant fusion protein containing a sequence corresponding to amino acids 120-320 of mouse ICAM1 (NP_034623.1).
Immunogen Sequence	LPAAQQVGKDLTLRCHVDGG APRTQLSAVLLRGEEILSRQ PVGGHPKDPKEITFTVLASR GDHGAFNSCRTELDLRPQGL ALFSNVSEARSLRTFDLPAT IPKLDTPDLLEVGTQQKLFC SLEGLFPASEARIYELGGQ MPTQESTNSSDSVSATALVE VTEEFDRTLPLRCVLELADQ ILETQRTLTVYNFSAPVLTLS



Immunohistochemistry analysis of paraffin-embedded rat lung using ICAM1 Rabbit polyclonal antibody (STJ11103325) at dilution of 1:100 (40x lens). Perform high pressure antigen retrieval with 10 mM citrate buffer pH 6.0 before commencing with immunohistochemistry staining protocol.

Immunohistochemistry analysis of paraffin-embedded mouse lung using ICAM1 Rabbit polyclonal antibody (STJ11103325) at dilution of 1:100 (40x lens). Perform high pressure antigen retrieval with 10 mM citrate buffer pH 6.0 before commencing with immunohistochemistry staining protocol.