

Anti-SCRN1 antibody (195-414) (STJ11103320)
STJ11103320

GENERAL INFORMATION

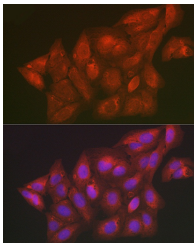
Product Type	Primary antibodies
Short Description	
Applications	WB/IF/ICC/ELISA
Host/Source	Rabbit
Reactivity	Human/Mouse/Rat

PRODUCT PROPERTIES

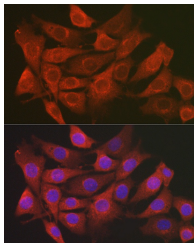
Clonality	Polyclonal
Clone ID	
Concentration	Lot specific
Conjugation	Unconjugated
Purification	Affinity purification
Dilution Range	WB:1:500-1:1000 IF/CC:1:50-1:200 ELISA:Recommended starting concentration is 1 Mu g/mL. Please optimize the concentration based on your specific assay requirements.
Formulation	PBS with 0.05% Proclin300, 50% Glycerol, pH 7.3.
Isotype	IgG
Storage Instruction	Store at-20°C for up to 1 year from the date of receipt, and avoid repeat freeze-thaw cycles.

TARGET INFORMATION

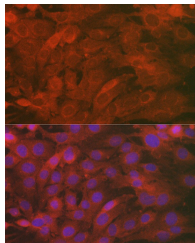
Gene ID	9805
Gene Symbol	SCRN1
Uniprot ID	SCRN1_HUMAN
Immunogen Region	195-414
Specificity	Recombinant fusion protein containing a sequence corresponding to amino acids 195-414 of human SCR1 (NP_055581.3).
Immunogen Sequence	TKMDAEHPELSYASQSGWW TGEGEFNFSEVFPVEDHLD CGAGKDSLEKQESITVQTM MNTLRDKASGVCIDSEFFLT TASGVSVLPQNRSSPCIHYF TGTPDPSRSIFKPFIFVDDV KLVPKTQSPCFGDDDDPAKKE PRFQEKPDRRHELYKAHEWA RAIESDQEQGRKLRSTMLE LEKQGLEAMEEILTSEPLD PAEVDGLFYDCVDTEIKFFK



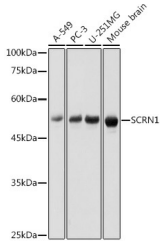
Immunofluorescence analysis of U2OS cells using SCR1 Rabbit polyclonal antibody (STJ11103320) at dilution of 1:100 (40x lens). Blue: DAPI for nuclear staining.



Immunofluorescence analysis of NIH/3T3 cells using SCR1 Rabbit polyclonal antibody (STJ11103320) at dilution of 1:100 (40x lens). Blue: DAPI for nuclear staining.



Immunofluorescence analysis of C6 cells using SCR1 Rabbit polyclonal antibody (STJ11103320) at dilution of 1:100 (40x lens). Blue: DAPI for nuclear staining.



Western blot analysis of extracts of various cell lines, using SCR1 antibody (STJ11103320) at 1:1000 dilution. Secondary antibody: HRP Goat Anti-Rabbit IgG (H+L) (STJ5000856) at 1:10000 dilution. Lysates/proteins: 25 Mu g per lane. Blocking buffer: 3% nonfat dry milk in TBST. Detection: ECL Basic Kit. Exposure time: 1s.

This product is suitable for in-vitro studies under the RESEARCH USE ONLY [RUO] licence. This product must not be used as for diagnostic or other medical purposes.
St John's Laboratory Ltd, Knowledge Dock Business Centre, University Way, London, E16 2RD | Tel: 0208 223 3081