

Anti-SSR2 antibody (18-145) (STJ11103317)

STJ11103317

GENERAL INFORMATION

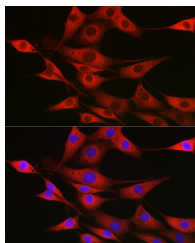
| | |
|--------------------------|-----------------------|
| Product Type | Primary antibodies |
| Short Description | |
| Applications | WB/IHC-P/IF/ICC/ELISA |
| Host/Source | Rabbit |
| Reactivity | Human/Mouse/Rat |

PRODUCT PROPERTIES

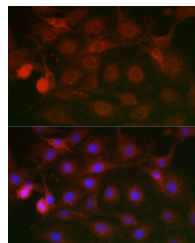
| | |
|-----------------------|---|
| Clonality | Polyclonal |
| Clone ID | |
| Concentration | Lot specific |
| Conjugation | Unconjugated |
| Purification | Affinity purification |
| Dilution Range | WB:1:500-1:1000 IHC-P:1:50-1:200 IF/ICC:1:50-1:200 ELISA:Recommended starting concentration is 1 Mu g/mL. Please optimize the concentration based on your specific assay requirements. |
| Formulation | PBS with 0.01% Thimerosal, 50% Glycerol, pH 7.3. |
| Isotype | IgG |
| Storage | Store at -20°C for up to 1 year from the date of receipt, and avoid repeat freeze-thaw cycles. |
| Instruction | |

TARGET INFORMATION

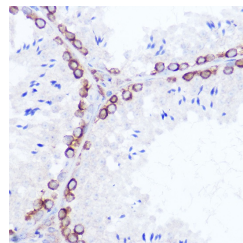
| | |
|---------------------------|--|
| Gene ID | 6746 |
| Gene Symbol | SSR2 |
| Uniprot ID | SSRB_HUMAN |
| Immunogen | |
| Region | 18-145 |
| Specificity | Recombinant fusion protein containing a sequence corresponding to amino acids 18-145 of human SSR2 (NP_003136.1). |
| Immunogen Sequence | EEGARLLASKLLNRYAVEG RDLTLQYNIYNVGSSAALDV ELSDDSFPPEDFGIVSGMLN VKWDRIAPASNVSHTVVLRP LKAGYFNFTSATITLAQED GPWVGSTAPGQGGLAQR EFDRRFSP |



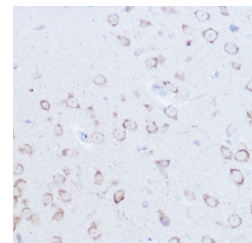
Immunofluorescence analysis of NIH/3T3 cells using SSR2 Rabbit polyclonal antibody (STJ11103317) at dilution of 1:100 (40x lens). Secondary antibody: Cy3 Goat Anti-Rabbit IgG (H+L) at 1:500 dilution. Blue: DAPI for nuclear staining.



Immunofluorescence analysis of C6 cells using SSR2 Rabbit polyclonal antibody (STJ11103317) at dilution of 1:100 (40x lens). Secondary antibody: Cy3 Goat Anti-Rabbit IgG (H+L) at 1:500 dilution. Blue: DAPI for nuclear staining.



Immunohistochemistry analysis of SSR2 in paraffin-embedded rat testis using SSR2 Rabbit polyclonal antibody (STJ11103317) at dilution of 1:100 (40x lens). Perform high pressure antigen retrieval with 10 mM citrate buffer pH 6.0 before commencing with immunohistochemistry staining protocol.



Immunohistochemistry analysis of SSR2 in paraffin-embedded mouse brain using SSR2 Rabbit polyclonal antibody (STJ11103317) at dilution of 1:100 (40x lens). Perform high pressure antigen retrieval with 10 mM citrate buffer pH 6.0 before commencing with immunohistochemistry staining protocol.

This product is suitable for in-vitro studies under the RESEARCH USE ONLY [RUO] licence. This product must not be used as for diagnostic or other medical purposes.
St John's Laboratory Ltd, Knowledge Dock Business Centre, University Way, London, E16 2RD | Tel: 0208 223 3081