

Anti-SIGLEC10 antibody (627-697) (STJ11103298)
STJ11103298

GENERAL INFORMATION

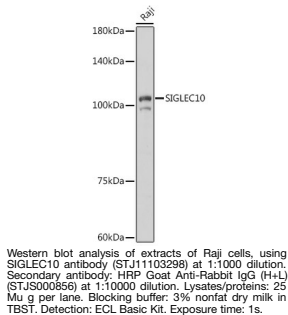
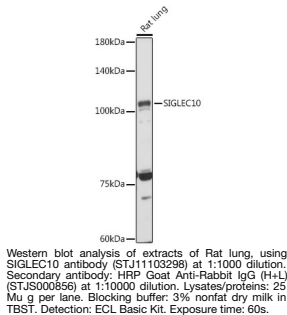
Product Type	Primary antibodies
Short Description	
Applications	WB/ELISA
Host/Source	Rabbit
Reactivity	Human/Rat

PRODUCT PROPERTIES

Clonality	Polyclonal
Clone ID	
Concentration	Lot specific
Conjugation	Unconjugated
Purification	Affinity purification
Dilution Range	WB:1:500-1:1000 ELISA:Recommended starting concentration is 1 μ g/mL. Please optimize the concentration based on your specific assay requirements.
Formulation	PBS with 0.05% Proclin300, 50% Glycerol, pH 7.3.
Isotype	IgG
Storage Instruction	Store at -20°C for up to 1 year from the date of receipt, and avoid repeat freeze-thaw cycles.

TARGET INFORMATION

Gene ID	89790
Gene Symbol	SIGLEC10
Uniprot ID	SIG10_HUMAN
Immunogen	
Immunogen Region	627-697
Specificity	Recombinant fusion protein containing a sequence corresponding to amino acids 627-697 of human SIGLEC10 (NP_149121.2).
Immunogen Sequence	GAPSPESKKNQKKQYQLPSF PEPKSSTQAPESQESQEELH YATLNFPQVVRPRPEARMPKG TQADYAEVKFQ



This product is suitable for in-vitro studies under the RESEARCH USE ONLY [RUO] licence. This product must not be used as for diagnostic or other medical purposes.
St John's Laboratory Ltd, Knowledge Dock Business Centre, University Way, London, E16 2RD | Tel: 0208 223 3081