

Anti-Tri-Methyl-Histone H3-K36 antibody [S5MR] (STJ11103285)

STJ11103285

GENERAL INFORMATION

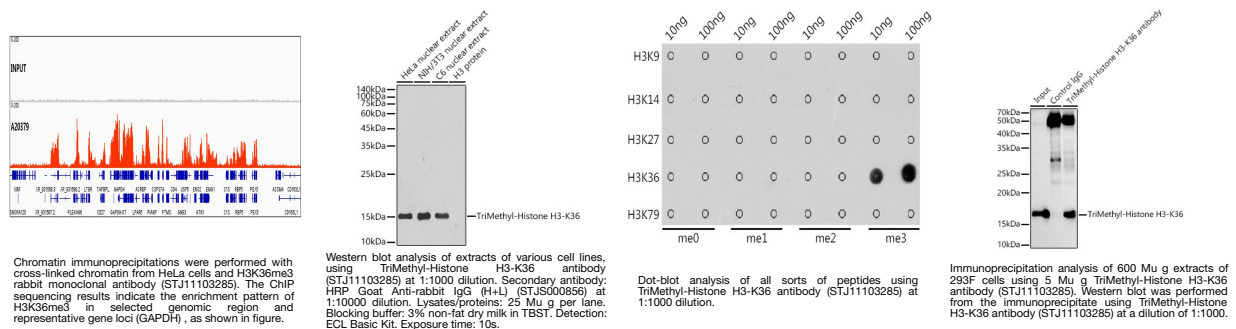
Product Type	Primary antibodies
Short Description	
Applications	WB/DB/IHC-P/IP/ELISA/ChIP/ChIP-seq
Host/Source	Rabbit
Reactivity	Human/Mouse/Rat/Other

PRODUCT PROPERTIES

Clonality	Monoclonal
Clone ID	S5MR
Concentration	Lot specific
Conjugation	Unconjugated
Purification	Affinity purification
Dilution Range	WB:1:500-1:1000 DB:1:500-1:1000 IHC-P:1:100-1:500 IP:0.5 Mu g-4 Mu g antibody for 200 Mu g-400 Mu g extracts of whole cells ELISA:Recommended starting concentration is 1 Mu g/mL. Please optimize the concentration based on your specifi
Formulation	PBS with 0.05% Proclin300, 0.05% BSA, 50% Glycerol, pH 7.3.
Isotype	IgG
Storage Instruction	Store at -20°C for up to 1 year from the date of receipt, and avoid repeat freeze-thaw cycles.

TARGET INFORMATION

Gene ID	8290 8350/8351/8352/8353/8354/8355/8356/8357/8358/8968
Gene Symbol	H3-4 H3C1.H3C2.H3C3.H3C4.H3C6.
Uniprot ID	H31T_HUMAN H31_HUMAN
Immunogen	MARTKQTARKSTGGKAPRKQ LATKAARKSAPATGGVKKPH RYRPGTVALREIRRYQKSTE LLIRKLFPQRLVREIAQDFK TDLRFQSSAVMALQEACEAY
Immunogen Region	
Specificity	A synthetic trimethylated peptide around K36 of human Histone H3 (NP_003520.1).
Immunogen Sequence	MARTKQTARKSTGGKAPRKQ LATKAARKSAPATGGVKKPH RYRPGTVALREIRRYQKSTE LLIRKLFPQRLVREIAQDFK TDLRFQSSAVMALQEACEAY



This product is suitable for in-vitro studies under the RESEARCH USE ONLY [RUO] licence. This product must not be used as for diagnostic or other medical purposes.
St John's Laboratory Ltd, Knowledge Dock Business Centre, University Way, London, E16 2RD | Tel: 0208 223 3081