

Anti-GIMAP1 antibody (140-280) (STJ11103278)

STJ11103278

GENERAL INFORMATION

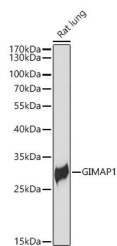
Product Type	Primary antibodies
Short Description	
Applications	WB/ELISA
Host/Source	Rabbit
Reactivity	Rat

PRODUCT PROPERTIES

Clonality	Polyclonal
Clone ID	
Concentration	Lot specific
Conjugation	Unconjugated
Purification	Affinity purification
Dilution	WB: 1:500-1:1000
Range	ELISA: Recommended starting concentration is 1 µg/mL. Please optimize the concentration based on your specific assay requirements.
Formulation	PBS with 0.01% Thimerosal, 50% Glycerol, pH 7.3.
Isotype	IgG
Storage	Store at -20°C for up to 1 year from the date of receipt, and avoid repeat freeze-thaw cycles.
Instruction	

TARGET INFORMATION

Gene ID	170575
Gene Symbol	GIMAP1
Uniprot ID	GIMA1_HUMAN
Immunogen	
Immunogen Region	140-280
Specificity	Recombinant Protein corresponding to a sequence within amino acids 140-280 of human GIMAP1 (NP_570115.1). GEDVLKWMVIVFTRKEDLAG GSLHDYVSNTENRALRELVA ECGGRVCAFDNRATGREQEA QVEQLLGMVEGLVLEHKGAH
Immunogen Sequence	YSNEVYELAQVLRWAGPEER LRRVAERVAARVQRRPWGAW LSARLWKWLKSPRSWRLGLA L



Western blot analysis of lysates from Rat lung using Anti-GIMAP1 Rabbit pAb (STJ11103278) at 1:1000 dilution.
Secondary antibody: HRP Goat Anti-Rabbit IgG (H+L) (STJ5000856) at 1:1000 dilution.
Lysates/proteins: 25 µg per lane.
Blocking buffer: 3% nonfat dry milk in TBST.
Detection: ECL Basic Kit
Exposure time: 15s.

This product is suitable for in-vitro studies under the RESEARCH USE ONLY [RUO] licence. This product must not be used as for diagnostic or other medical purposes.
St John's Laboratory Ltd, Knowledge Dock Business Centre, University Way, London, E16 2RD | Tel: 0208 223 3081