

Anti-Slc39a11 antibody (101-174) (STJ11103273)

STJ11103273

GENERAL INFORMATION

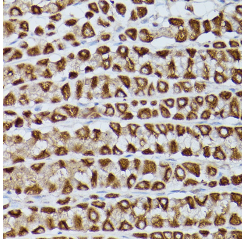
Product Type	Primary antibodies
Short Description	
Applications	WB/IHC-P/ELISA
Host/Source	Rabbit
Reactivity	Human/Mouse/Rat

PRODUCT PROPERTIES

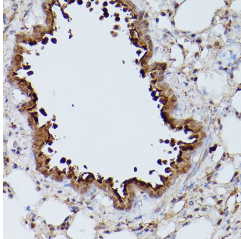
Clonality	Polyclonal
Clone ID	
Concentration	Lot specific
Conjugation	Unconjugated
Purification	Affinity purification
Dilution Range	WB:1:500-1:1000 IHC-P:1:50-1:200 ELISA:Recommended starting concentration is 1 μ g/mL. Please optimize the concentration based on your specific assay requirements.
Formulation	PBS with 0.05% Proclin300, 50% Glycerol, pH 7.3.
Isotype	IgG
Storage Instruction	Store at -20°C for up to 1 year from the date of receipt, and avoid repeat freeze-thaw cycles.

TARGET INFORMATION

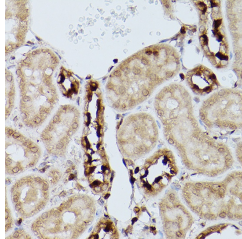
Gene ID	69806
Gene Symbol	Slc39a11
Uniprot ID	S39AB_MOUSE
Immunogen	
Immunogen Region	101-174
Specificity	Recombinant fusion protein containing a sequence corresponding to amino acids 101-174 of mouse Slc39a11 (NP_001159975.1).
Immunogen Sequence	HLGATEDPQTALALNLDPAL MKKSDPRDPTSLFPSELS IRIGSTGLLSDKRENGEVYQ RKKVAATDLAEGVA



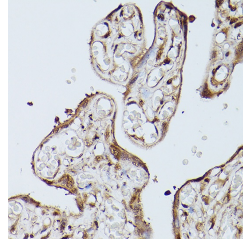
Immunohistochemistry analysis of paraffin-embedded rat stomach using Slc39a11 Rabbit polyclonal antibody (STJ11103273) at dilution of 1:100 (40x lens). Perform high pressure antigen retrieval with 10 mM citrate buffer pH 6.0 before commencing with immunohistochemistry staining protocol.



Immunohistochemistry analysis of paraffin-embedded mouse lung using Slc39a11 Rabbit polyclonal antibody (STJ11103273) at dilution of 1:100 (40x lens). Perform high pressure antigen retrieval with 10 mM citrate buffer pH 6.0 before commencing with immunohistochemistry staining protocol.



Immunohistochemistry analysis of paraffin-embedded mouse kidney using Slc39a11 Rabbit polyclonal antibody (STJ11103273) at dilution of 1:100 (40x lens). Perform high pressure antigen retrieval with 10 mM citrate buffer pH 6.0 before commencing with immunohistochemistry staining protocol.



Immunohistochemistry analysis of paraffin-embedded human placenta using Slc39a11 Rabbit polyclonal antibody (STJ11103273) at dilution of 1:100 (40x lens). Perform high pressure antigen retrieval with 10 mM citrate buffer pH 6.0 before commencing with immunohistochemistry staining protocol.

This product is suitable for in-vitro studies under the RESEARCH USE ONLY [RUO] licence. This product must not be used as for diagnostic or other medical purposes.
St John's Laboratory Ltd, Knowledge Dock Business Centre, University Way, London, E16 2RD | Tel: 0208 223 3081