

Anti-SLC5A2 antibody (564-624) (STJ11103251)
STJ11103251

GENERAL INFORMATION

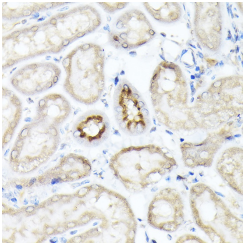
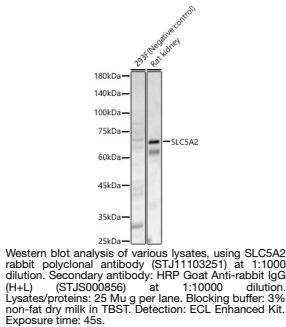
Product Type	Primary antibodies
Short Description	
Applications	WB/IHC-P/IF/ICC/ELISA
Host/Source	Rabbit
Reactivity	Human/Mouse/Rat

PRODUCT PROPERTIES

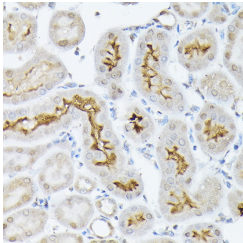
Clonality	Polyclonal
Clone ID	
Concentration	Lot specific
Conjugation	Unconjugated
Purification	Affinity purification
Dilution Range	WB:1:500-1:1000 IHC-P:1:50-1:200 IF/ICC:1:50-1:200 ELISA:Recommended starting concentration is 1 µg/mL. Please optimize the concentration based on your specific assay requirements.
Formulation	PBS with 0.01% Thimerosal, 50% Glycerol, pH 7.3.
Isotype	IgG
Storage Instruction	Store at -20°C for up to 1 year from the date of receipt, and avoid repeat freeze-thaw cycles.

TARGET INFORMATION

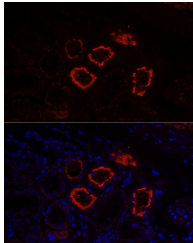
Gene ID	6524
Gene Symbol	SLC5A2
Uniprot ID	SC5A2_HUMAN
Immunogen	
Immunogen Region	564-624
Specificity	Recombinant fusion protein containing a sequence corresponding to amino acids 564-624 of human SLC5A2 (NP_003032.1).
Immunogen Sequence	RHSKEERDLDADEQQGSSL PVQNGCPESAMEMNEPQAPA PSLFRQCLLWFCGMSRGGVG S



Immunohistochemistry analysis of paraffin-embedded mouse kidney using SLC5A2 rabbit polyclonal antibody (STJ11103251) at dilution of 1:100 (40x lens). Perform high pressure antigen retrieval with 10 mM citrate buffer pH 6.0 before commencing with immunohistochemistry staining protocol.



Immunohistochemistry analysis of paraffin-embedded rat kidney using SLC5A2 rabbit polyclonal antibody (STJ11103251) at dilution of 1:100 (40x lens). Perform high pressure antigen retrieval with 10 mM citrate buffer pH 6.0 before commencing with immunohistochemistry staining protocol.



Immunofluorescence analysis of Rat kidney using SLC5A2 antibody (STJ11103251) at dilution of 1:100 (40x lens). Blue: DAPI for nuclear staining.

This product is suitable for in-vitro studies under the RESEARCH USE ONLY [RUO] licence. This product must not be used as for diagnostic or other medical purposes.
St John's Laboratory Ltd, Knowledge Dock Business Centre, University Way, London, E16 2RD | Tel: 0208 223 3081