

# Anti-CCR5 antibody (246-345) (STJ11103247)

STJ11103247

## GENERAL INFORMATION

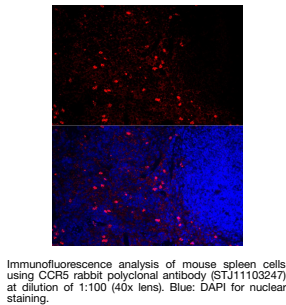
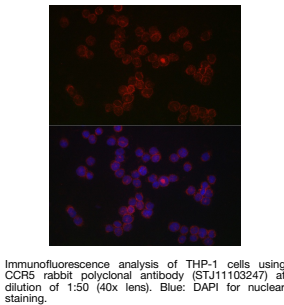
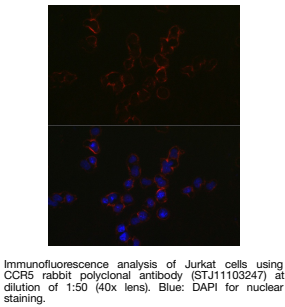
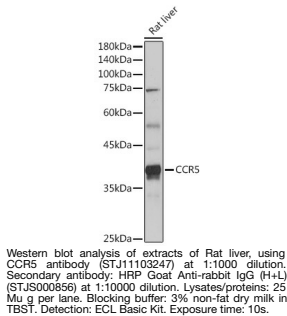
|                          |                    |
|--------------------------|--------------------|
| <b>Product Type</b>      | Primary antibodies |
| <b>Short Description</b> |                    |
| <b>Applications</b>      | WB/IF/ICC/ELISA    |
| <b>Host/Source</b>       | Rabbit             |
| <b>Reactivity</b>        | Human/Mouse/Rat    |

## PRODUCT PROPERTIES

|                            |   |
|----------------------------|---|
| <b>Clonality</b>           | Polyclonal  |
| <b>Clone ID</b>            |   |
| <b>Concentration</b>       | Lot specific  |
| <b>Conjugation</b>         | Unconjugated  |
| <b>Purification</b>        | Affinity purification   |
| <b>Dilution Range</b>      | WB:1:500-1:1000<br>IF/ICC:1:50-1:200<br>ELISA:Recommended starting concentration is 1 µg/mL. Please optimize the concentration based on your specific assay requirements. |
| <b>Formulation</b>         | PBS with 0.05% Proclin300, 50% Glycerol, pH 7.3.  |
| <b>Isotype</b>             | IgG   |
| <b>Storage Instruction</b> | Store at -20°C for up to 1 year from the date of receipt, and avoid repeat freeze-thaw cycles.  |

## TARGET INFORMATION

|                           |  |
|---------------------------|--|
| <b>Gene ID</b>            | 1234   |
| <b>Gene Symbol</b>        | CCR5   |
| <b>Uniprot ID</b>         | CCR5_HUMAN   |
| <b>Immunogen</b>          |  |
| <b>Immunogen Region</b>   | 246-345  |
| <b>Specificity</b>        | A synthetic peptide corresponding to a sequence within amino acids 246-345 of human CCR5 (NP_000570.1).  |
| <b>Immunogen Sequence</b> | LFWAPYNIVLLNTFQEFFG LNNCSSNRLDQAMQVTETL GMTHCCINPIIYAFVGEKFR NYLLVFFQKHIKRFCKCCS<br>IFQQEAPERASSVYTRSTGE |



This product is suitable for in-vitro studies under the RESEARCH USE ONLY [RUO] licence. This product must not be used as for diagnostic or other medical purposes.  
St John's Laboratory Ltd, Knowledge Dock Business Centre, University Way, London, E16 2RD | Tel: 0208 223 3081