

Anti-Beta-Catenin antibody (300-400 aa) [S9MM] (STJ11103229)

STJ11103229

GENERAL INFORMATION

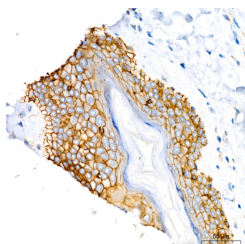
Product Type	Primary antibodies
Short Description	
Applications	WB/IHC-P/ELISA
Host/Source	Mouse
Reactivity	Human/Mouse/Rat

PRODUCT PROPERTIES

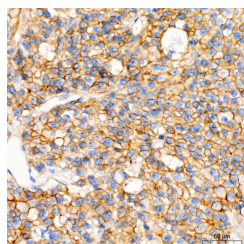
Clonality	Monoclonal
Clone ID	S9MM
Concentration	Lot specific
Conjugation	Unconjugated
Purification	Affinity purification
Dilution Range	WB:1:1000-1:4000 IHC-P:1:100-1:500 ELISA:Recommended starting concentration is 1 Mu g/mL. Please optimize the concentration based on your specific assay requirements.
Formulation	PBS with 0.05% Proclin300, 50% Glycerol, pH 7.3.
Isotype	IgG1k
Storage Instruction	Store at -20°C for up to 1 year from the date of receipt, and avoid repeat freeze-thaw cycles.

TARGET INFORMATION

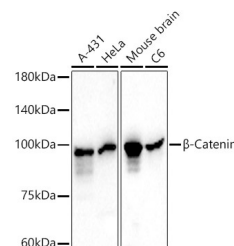
Gene ID	1499
Gene Symbol	CTNNB1
Uniprot ID	CTNB1_HUMAN
Immunogen	
Immunogen Region	300-400 aa
Specificity	A synthetic peptide corresponding to a sequence within amino acids 300-400 of human Beta-Catenin (NP_001895.1).
Immunogen Sequence	CLQILAYGNQESKLIILASG GPQALVNIMRTYTYEKLLWT TSRVLKVLSCSSNKPAIVE AGGMQALGLHLTDPSQRLVQ NCLWTLRLNSDAATKQEGME G



Immunohistochemistry analysis of Beta-Catenin in paraffin-embedded human skin using Beta-Catenin Mouse monoclonal antibody (STJ11103229) at dilution of 1:50 (40x lens). Perform high pressure antigen retrieval with 10 mM Tris/EDTA buffer pH 9.0 before commencing with immunohistochemistry staining protocol.



Immunohistochemistry analysis of Beta-Catenin in paraffin-embedded human liver cancer using Beta-Catenin Mouse monoclonal antibody (STJ11103229) at dilution of 1:50 (40x lens). Perform high pressure antigen retrieval with 10 mM Tris/EDTA buffer pH 9.0 before commencing with immunohistochemistry staining protocol.



Western blot analysis of various lysates using Beta-Catenin Mouse monoclonal antibody (STJ11103229) at 1:1000 dilution. Secondary antibody: HRP Goat Anti-Mouse IgG (H+L) at 1:10000 dilution. Lysates/proteins: 25 Mu g per lane. Blocking buffer: 3% nonfat dry milk in TBST. Detection: ECL Basic Kit. Exposure time: 30s.

This product is suitable for in-vitro studies under the RESEARCH USE ONLY [RUO] licence. This product must not be used as for diagnostic or other medical purposes.
St John's Laboratory Ltd, Knowledge Dock Business Centre, University Way, London, E16 2RD | Tel: 0208 223 3081