

Anti-SARS-CoV-2-3CLpro antibody (1-306) (STJ11103221)

STJ11103221

GENERAL INFORMATION

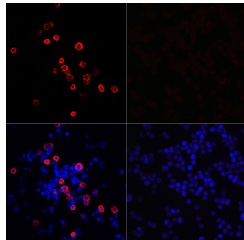
| | |
|--------------------------|--------------------|
| Product Type | Primary antibodies |
| Short Description | |
| Applications | WB/IF/ICC/ELISA |
| Host/Source | Rabbit |
| Reactivity | SARS-CoV-2 |

PRODUCT PROPERTIES

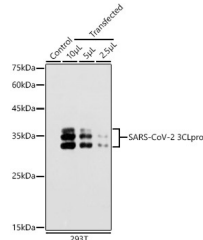
| | |
|----------------------------|--|
| Clonality | Polyclonal |
| Clone ID | |
| Concentration | Lot specific |
| Conjugation | Unconjugated |
| Purification | Affinity purification |
| Dilution | WB:1:2000-1:6000 |
| Range | IF/ICC:1:50-1:200 |
| | ELISA:Recommended starting concentration is 1 μ g/mL. Please optimize the concentration based on your specific assay requirements. |
| Formulation | PBS with 0.02% Sodium Azide, 50% Glycerol, pH 7.3. |
| Isotype | IgG |
| Storage Instruction | Store at -20°C for up to 1 year from the date of receipt, and avoid repeat freeze-thaw cycles. |

TARGET INFORMATION

| | |
|---------------------------|--|
| Gene ID | |
| Gene Symbol | |
| Uniprot ID | |
| Immunogen | |
| Immunogen Region | 1-306 |
| Specificity | Recombinant fusion protein containing a sequence corresponding to amino acids 1-306 of coronavirus 3CLpro (YP_009725295.1). |
| Immunogen Sequence | MESLVPGFNEKTHVQLSLPV LQVRDVLVRGFGDSVEEVLS EARQHLKDGTCGLVEVEKGV LPQLEQPYVFIKRS DARTAP HGHVMVELVALEGIQYGRS GETLGLVLPVHGEIPVAYRK VLLRKNGNKGAGGHSYGADL KSFDLGDDELGTDPTYEDFQEN WNTKHSSGVTRMLMRELNGG AYTRYVDNNFCGPDGYPLEC IKDLLARAGKASCTLSEQLD FIDTKRGVYCCREHEHEIA |



Immunofluorescence analysis of 293T cells transfected with SARS-CoV-2 3CLpro fusion protein (top left) and untreated 293T cells (top right) using SARS-CoV-2 3CLpro Rabbit polyclonal antibody (STJ11103221) at dilution of 1:100 (40x lens). Blue: DAPI for nuclear staining.



Western blot analysis of extracts of 293T cells, using SARS-CoV-2 3CLpro antibody (STJ11103221) at 1:5000 dilution. Secondary antibody: HRP Goat Anti-Rabbit IgG (H+L) (STJ5000856) at 1:10000 dilution. Lysates/proteins: 25 μ g per lane. Blocking buffer: 3% nonfat dry milk in TBST. Detection: ECL Basic Kit. Exposure time: 180s.

This product is suitable for in-vitro studies under the RESEARCH USE ONLY [RUO] licence. This product must not be used as for diagnostic or other medical purposes.
St John's Laboratory Ltd, Knowledge Dock Business Centre, University Way, London, E16 2RD | Tel: 0208 223 3081