

## Anti-Acetyl-Histone H3-K27 antibody (STJ11103215)

STJ11103215

### GENERAL INFORMATION

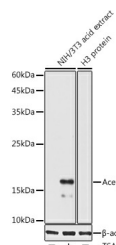
<b>Product Type</b>	Primary antibodies
<b>Short Description</b>	
<b>Applications</b>	WB/DB/ELISA/ChIP
<b>Host/Source</b>	Rabbit
<b>Reactivity</b>	Human/Mouse/Rat/Other

### PRODUCT PROPERTIES

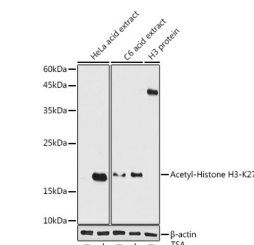
<b>Clonality</b>	Polyclonal
<b>Clone ID</b>	
<b>Concentration</b>	Lot specific
<b>Conjugation</b>	Unconjugated
<b>Purification</b>	Affinity purification
<b>Dilution Range</b>	WB:1:500-1:1000 DB:1:500-1:1000 ELISA:Recommended starting concentration is 1 Mu g/mL. Please optimize the concentration based on your specific assay requirements. ChIP:5 Mu g antibody for 5 Mu g-10 Mu g of Chromatin
<b>Formulation</b>	PBS with 0.05% Proclin300, 50% Glycerol, pH 7.3.
<b>Isotype</b>	IgG
<b>Storage Instruction</b>	Store at -20°C for up to 1 year from the date of receipt, and avoid repeat freeze-thaw cycles.

### TARGET INFORMATION

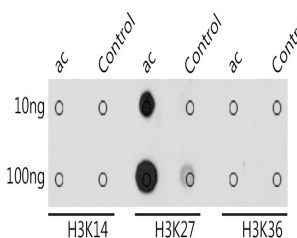
<b>Gene ID</b>	8290 <a href="#">8350/8351/8352/8353/8354/8355/8356/8357/8358/8968</a>
<b>Gene Symbol</b>	H3-4 <a href="#">H3C1.H3C2.H3C3.H3C4.H3C6.</a> <a href="#">H31T_HUMAN</a> <a href="#">H31_HUMAN</a>
<b>Uniprot ID</b>	<a href="#">H31T_HUMAN</a> <a href="#">H31_HUMAN</a>
<b>Immunogen</b>	ARKSA
<b>Immunogen Region</b>	
<b>Specificity</b>	A synthetic acetylated peptide around K27 of human Histone H3 (NP_003520.1).
<b>Immunogen Sequence</b>	ARKSA



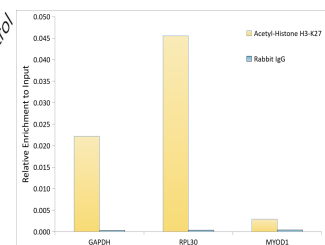
Western blot analysis of extracts of various cell lines, using Acetyl-Histone H3-K27 antibody (STJ11103215) at 1:1000 dilution. HeLa/C6 cells were treated by TSA (1 uM) at 37 °C for 18 hours. Secondary antibody: HRP Goat Anti-rabbit IgG (H+L) (STJ5000856) at 1:10000 dilution. Lysates/proteins: 25 Mu g per lane. Blocking buffer: 3% non-fat dry milk in TBST. Detection: ECL Basic Kit. Exposure time: 1s.



Western blot analysis of extracts of various cell lines, using Acetyl-Histone H3-K27 antibody (STJ11103215) at 1:1000 dilution. HeLa cells and C6 cells were treated by TSA (1 uM) at 37 °C for 18 hours. Secondary antibody: HRP Goat Anti-rabbit IgG (H+L) (STJ5000856) at 1:10000 dilution. Lysates/proteins: 25 Mu g per lane. Blocking buffer: 3% non-fat dry milk in TBST. Detection: ECL Basic Kit. Exposure time: 180s.



Dot-blot analysis of all sorts of peptides using Acetyl-Histone H3-K27 antibody (STJ11103215) at 1:1000 dilution.



Chromatin immunoprecipitation analysis of extracts of HeLa cells, using Acetyl-Histone H3-K27 rabbit polyclonal antibody (STJ11103215) and rabbit IgG. The amount of immunoprecipitated DNA was checked by quantitative PCR. Histogram was constructed by the ratios of the immunoprecipitated DNA to the input.

This product is suitable for in-vitro studies under the RESEARCH USE ONLY [RUO] licence. This product must not be used as for diagnostic or other medical purposes.  
St John's Laboratory Ltd, Knowledge Dock Business Centre, University Way, London, E16 2RD | Tel: 0208 223 3081