

Anti-Histone H2B antibody (47-126) [S2MR] (STJ11103152)
STJ11103152

GENERAL INFORMATION

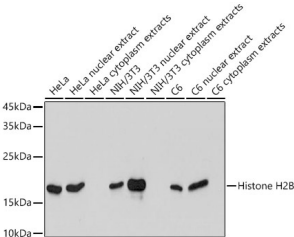
Product Type	Primary antibodies
Short Description	
Applications	WB/IHC-P/ELISA
Host/Source	Rabbit
Reactivity	Human/Mouse/Rat/Other

PRODUCT PROPERTIES

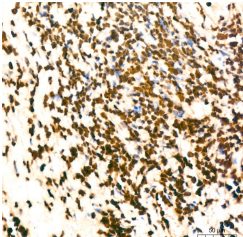
Clonality	Monoclonal
Clone ID	S2MR
Concentration	Lot specific
Conjugation	Unconjugated
Purification	Affinity purification
Dilution Range	WB:1:500-1:1000 IHC-P:1:50-1:200 ELISA:Recommended starting concentration is 1 µg/mL. Please optimize the concentration based on your specific assay requirements.
Formulation	PBS with 0.02% Sodium Azide, 0.05% BSA, 50% Glycerol, pH 7.3.
Isotype	IgG
Storage Instruction	Store at -20°C for up to 1 year from the date of receipt, and avoid repeat freeze-thaw cycles.

TARGET INFORMATION

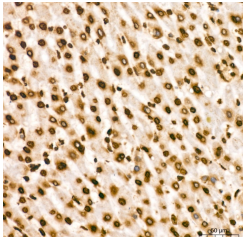
Gene ID	8349 3017/8339/8343/8344/8346/8347
Gene Symbol	H2BC21 H2BC4.H2BC6.H2BC7.H2BC8.H2BC10
Uniprot ID	H2B2E_HUMAN H2B1C_HUMAN
Immunogen	
Immunogen Region	47-126
Specificity	A synthetic peptide corresponding to a sequence within amino acids 47-126 of human Histone H2B (O60814).
Immunogen Sequence	KQVHPDTGISSKAMGIMNSF VNDIFERIAGEASRLAHYNK RSTITSREIQTAVRLLLPGE LAKHAVSEGTKAVTKYTSK



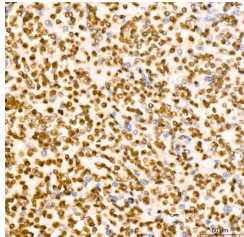
Western blot analysis of extracts of various cell lines, using Histone H2B antibody (STJ11103152) at 1:1000 dilution. Secondary antibody: HRP Goat Anti-rabbit IgG (HRP) (STJ5000856) at 1:10000 dilution. Lysates/proteins: 25 µg per lane. Blocking buffer: 3% non-fat dry milk in TBST. Detection: ECL Enhanced Kit. Exposure time: 60s.



Immunohistochemistry analysis of Histone H2B in paraffin-embedded human cervix cancer tissue using Histone H2B rabbit monoclonal antibody (STJ11103152) at a dilution of 1:200 (40x lens). High pressure antigen retrieval was performed with 0.01 M Tris-EDTA buffer (pH 9.0) prior to immunohistochemistry staining.



Immunohistochemistry analysis of Histone H2B in paraffin-embedded human liver tissue using Histone H2B rabbit monoclonal antibody (STJ11103152) at a dilution of 1:200 (40x lens). High pressure antigen retrieval was performed with 0.01 M Tris-EDTA buffer (pH 9.0) prior to immunohistochemistry staining.



Immunohistochemistry analysis of Histone H2B in paraffin-embedded human spleen tissue using Histone H2B rabbit monoclonal antibody (STJ11103152) at a dilution of 1:200 (40x lens). High pressure antigen retrieval was performed with 0.01 M Tris-EDTA buffer (pH 9.0) prior to immunohistochemistry staining.

This product is suitable for in-vitro studies under the RESEARCH USE ONLY [RUO] licence. This product must not be used as for diagnostic or other medical purposes.
St John's Laboratory Ltd, Knowledge Dock Business Centre, University Way, London, E16 2RD | Tel: 0208 223 3081