

Anti-Talin 2 antibody (350-450) [S1MR] (STJ11103151)
STJ11103151

GENERAL INFORMATION

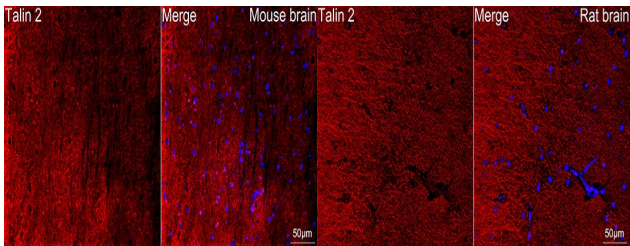
Product Type	Primary antibodies
Short Description	
Applications	WB/IHC-P/IF/ICC/ELISA
Host/Source	Rabbit
Reactivity	Human/Mouse/Rat

PRODUCT PROPERTIES

Clonality	Monoclonal
Clone ID	S1MR
Concentration	Lot specific
Conjugation	Unconjugated
Purification	Affinity purification
Dilution Range	WB:1:1000-1:6000 IHC-P:1:500-1:2000 IF/ICC:1:100-1:400 ELISA:Recommended starting concentration is 1 Mu g/mL. Please optimize the concentration based on your specific assay requirements.
Formulation	PBS with 0.02% Sodium Azide, 0.05% BSA, 50% Glycerol, pH 7.3.
Isotype	IgG
Storage Instruction	Store at -20°C for up to 1 year from the date of receipt, and avoid repeat freeze-thaw cycles.

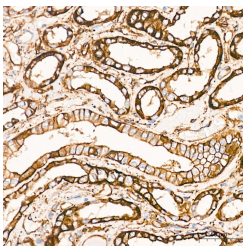
TARGET INFORMATION

Gene ID	83660
Gene Symbol	TLN2
Uniprot ID	TLN2_HUMAN
Immunogen	
Immunogen Region	350-450
Specificity	A synthetic peptide corresponding to a sequence within amino acids 350-450 of human Talin 2 (Q9Y4G6).
Immunogen Sequence	VLQEWPLTTVKRWASPFSK TLDGGEYQESYYSVQTTEGE QISQLIAGYIDILKKQSK DRFGLEGDEESTMLEESVSP KKSTILQQQFNRTGKAEHGS V

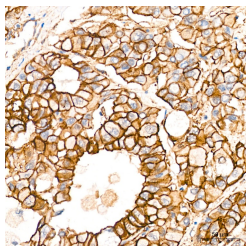


Confocal imaging of Talin 2 in paraffin-embedded Mouse brain tissue using Talin 2 Rabbit monoclonal antibody (STJ11103151), dilution 1:100 followed by a further incubation with Cy3 Goat Anti-Rabbit IgG (H+L) (dilution 1:500) (Red), DAPI was used for nuclear staining (Blue). Objective: 40x. Perform microwave antigen retrieval with 0.01 M citrate buffer (pH 6.0) prior to IF staining.

Confocal imaging of Talin 2 in paraffin-embedded Rat brain tissue using Talin 2 Rabbit monoclonal antibody (STJ11103151), dilution 1:100 followed by a further incubation with Cy3 Goat Anti-Rabbit IgG (H+L) (dilution 1:500) (Red), DAPI was used for nuclear staining (Blue). Objective: 40x. Perform microwave antigen retrieval with 0.01 M citrate buffer (pH 6.0) prior to IF staining.



Immunohistochemistry analysis of Talin 2 in paraffin-embedded human kidney tissue using Talin 2 Rabbit monoclonal antibody (STJ11103151) at a dilution of 1:500 (40x lens). High pressure antigen retrieval was performed with 0.01 M citrate buffer (pH 6.0) prior to immunohistochemistry staining.



Immunohistochemistry analysis of Talin 2 in paraffin-embedded human liver cancer tissue using Talin 2 Rabbit monoclonal antibody (STJ11103151) at a dilution of 1:500 (40x lens). High pressure antigen retrieval was performed with 0.01 M citrate buffer (pH 6.0) prior to immunohistochemistry staining.

This product is suitable for in-vitro studies under the RESEARCH USE ONLY [RUO] licence. This product must not be used as for diagnostic or other medical purposes.
St John's Laboratory Ltd, Knowledge Dock Business Centre, University Way, London, E16 2RD | Tel: 0208 223 3081