

Anti-BCL2L12 antibody (200-300) [S9MR] (STJ11103149)

STJ11103149

GENERAL INFORMATION

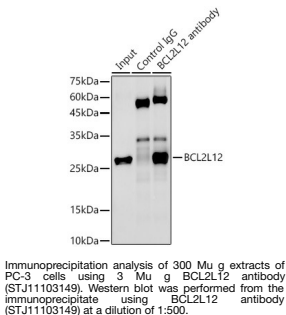
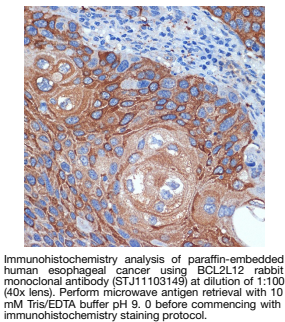
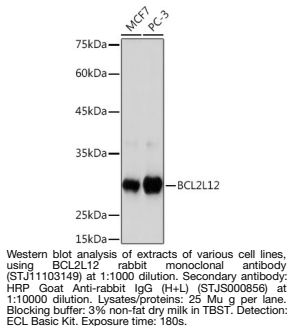
Product Type	Primary antibodies
Short Description	
Applications	WB/IHC-P/IP/ELISA
Host/Source	Rabbit
Reactivity	Human

PRODUCT PROPERTIES

Clonality	Monoclonal
Clone ID	S9MR
Concentration	Lot specific
Conjugation	Unconjugated
Purification	Affinity purification
Dilution Range	WB:1:500-1:2000 IHC-P:1:50-1:200 IP:0.5 Mu g-4 Mu g antibody for 200 Mu g-400 Mu g extracts of whole cells ELISA:Recommended starting concentration is 1 Mu g/mL. Please optimize the concentration based on your specific assay requirements.
Formulation	PBS with 0.02% Sodium Azide, 0.05% BSA, 50% Glycerol, pH 7.3.
Isotype	IgG
Storage Instruction	Store at -20°C for up to 1 year from the date of receipt, and avoid repeat freeze-thaw cycles.

TARGET INFORMATION

Gene ID	83596
Gene Symbol	BCL2L12
Uniprot ID	B2L12_HUMAN
Immunogen	
Immunogen Region	200-300
Specificity	Recombinant fusion protein containing a sequence corresponding to amino acids 200-300 of human BCL2L12 (Q9HB09).
Immunogen Sequence	GPPSTEKEAILRRLVALLLEEAEVINQKLASDPALRSKLVRLSSDSFARLVELFCSRDDS SRPSRACPGPPPPSPEPLAR LALAMELSRRVAGLGGLAG L



This product is suitable for in-vitro studies under the RESEARCH USE ONLY [RUO] licence. This product must not be used as for diagnostic or other medical purposes.
St John's Laboratory Ltd, Knowledge Dock Business Centre, University Way, London, E16 2RD | Tel: 0208 223 3081