

Anti-Tubulin beta-1 chain antibody (352-451) [S7MR] (STJ11103147)

GENERAL INFORMATION

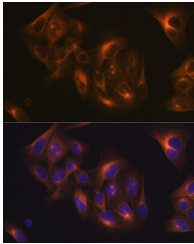
Product Type	Primary antibodies
Short Description	
Applications	WB/IF/ICC/ELISA
Host/Source	Rabbit
Reactivity	Human/Mouse/Rat/Cow/Dog/Monkey

PRODUCT PROPERTIES

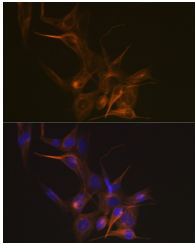
Clonality	Monoclonal
Clone ID	S7MR
Concentration	Lot specific
Conjugation	Unconjugated
Purification	Affinity purification
Dilution Range	WB:1:500-1:2000 IF/ICC:1:50-1:200 ELISA:Recommended starting concentration is 1 Mu g/mL. Please optimize the concentration based on your specific assay requirements.
Formulation	PBS with 0.02% Sodium Azide, 0.05% BSA, 50% Glycerol, pH 7.3.
Isotype	IgG
Storage Instruction	Store at -20°C for up to 1 year from the date of receipt, and avoid repeat freeze-thaw cycles.

TARGET INFORMATION

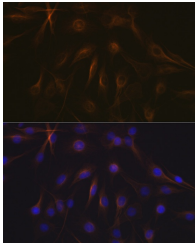
Gene ID	81027
Gene Symbol	TUBB1
Uniprot ID	TBB1_HUMAN
Immunogen	
Immunogen Region	352-451
Specificity	A synthetic peptide corresponding to a sequence within amino acids 352-451 of human Tubulin beta-1 chain (Q9H4B7).
Immunogen Sequence	AVCDIPPRGLSMAATFIGNN TAIQEIFNRVSEHFSAMFKR KAFVHWYTSEGMDINEFGEA ENNIHDLVSEYQQFQDAKAV LEEDEEVTEAEEMEPEDKGH



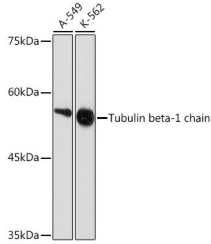
Immunofluorescence analysis of U-2 OS cells using Tubulin beta-1 chain Rabbit monoclonal antibody (STJ11103147) at dilution of 1:100 (40x lens). Blue: DAPI for nuclear staining.



Immunofluorescence analysis of NIH-3T3 cells using Tubulin beta-1 chain Rabbit monoclonal antibody (STJ11103147) at dilution of 1:100 (40x lens). Blue: DAPI for nuclear staining.



Immunofluorescence analysis of C6 cells using Tubulin beta-1 chain Rabbit monoclonal antibody (STJ11103147) at dilution of 1:100 (40x lens). Blue: DAPI for nuclear staining.



Western blot analysis of extracts of various cell lines, using Tubulin beta-1 chain Rabbit monoclonal antibody (STJ11103147) at 1:1000 dilution. Secondary antibody: HRP-Goat Anti-Rabbit IgG (H+L) (STJ5000856) at 1:10000 dilution. Lysates/proteins: 25 Mu g per lane. Blocking buffer: 3% nonfat dry milk in TBST. Detection: ECL Basic Kit. Exposure time: 90s.

This product is suitable for in-vitro studies under the RESEARCH USE ONLY [RUO] licence. This product must not be used as for diagnostic or other medical purposes.
St John's Laboratory Ltd, Knowledge Dock Business Centre, University Way, London, E16 2RD | Tel: 0208 223 3081