

**Anti-TAX1BP3 antibody (1-100) [S8MR] (STJ11103138)**  
STJ11103138

**GENERAL INFORMATION**

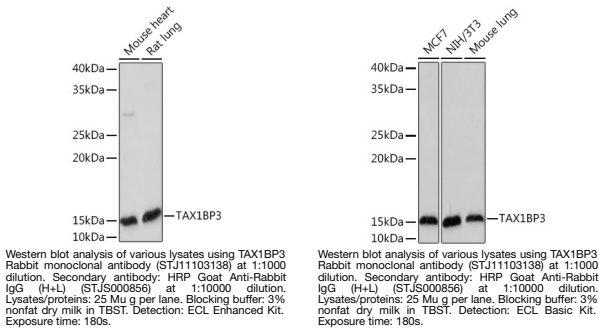
<b>Product Type</b>	Primary antibodies
<b>Short Description</b>	
<b>Applications</b>	WB/ELISA
<b>Host/Source</b>	Rabbit
<b>Reactivity</b>	Human/Mouse/Rat

**PRODUCT PROPERTIES**

<b>Clonality</b>	Monoclonal
<b>Clone ID</b>	S8MR
<b>Concentration</b>	Lot specific
<b>Conjugation</b>	Unconjugated
<b>Purification</b>	Affinity purification
<b>Dilution Range</b>	WB:1:500-1:1000 ELISA:Recommended starting concentration is 1 Mu g/mL. Please optimize the concentration based on your specific assay requirements.
<b>Formulation</b>	PBS with 0.02% Sodium Azide, 0.05% BSA, 50% Glycerol, pH 7.3.
<b>Isotype</b>	IgG
<b>Storage Instruction</b>	Store at -20°C for up to 1 year from the date of receipt, and avoid repeat freeze-thaw cycles.

**TARGET INFORMATION**

<b>Gene ID</b>	30851
<b>Gene Symbol</b>	TAX1BP3
<b>Uniprot ID</b>	TX1B3_HUMAN
<b>Immunogen</b>	
<b>Immunogen</b>	1-100
<b>Region</b>	
<b>Specificity</b>	A synthetic peptide corresponding to a sequence within amino acids 1-100 of human TAX1BP3 (NP_055419.1).
<b>Immunogen</b>	MSYIPGQPVTAVVQRVEIHK LRQGENLILGFSIGGGIDQD PSQNPFSSEDKTDKGIYVTRV SEGGP AEIAGLQIGDKIMQV
<b>Sequence</b>	NGWDMTMVTHDQARKRLTKR



This product is suitable for in-vitro studies under the RESEARCH USE ONLY [RUO] licence. This product must not be used as for diagnostic or other medical purposes.  
St John's Laboratory Ltd, Knowledge Dock Business Centre, University Way, London, E16 2RD | Tel: 0208 223 3081