

Anti-ZBTB7A/FBI-1/LRF antibody (450-550) [S3MR] (STJ11103133)
STJ11103133

GENERAL INFORMATION

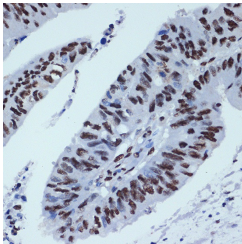
Product Type	Primary antibodies
Short Description	
Applications	WB/IHC-P/IF/ICC/ELISA
Host/Source	Rabbit
Reactivity	Human

PRODUCT PROPERTIES

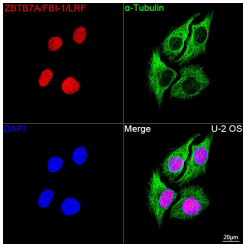
Clonality	Monoclonal
Clone ID	S3MR
Concentration	Lot specific
Conjugation	Unconjugated
Purification	Affinity purification
Dilution Range	WB:1:1000-1:6000 IHC-P:1:100-1:1000 IF/ICC:1:200-1:2000 ELISA:Recommended starting concentration is 1 µg/mL. Please optimize the concentration based on your specific assay requirements.
Formulation	PBS with 0.02% Sodium Azide, 0.05% BSA, 50% Glycerol, pH 7.3.
Isotype	IgG
Storage	Store at -20°C for up to 1 year from the date of receipt, and avoid repeat freeze-thaw cycles.
Instruction	

TARGET INFORMATION

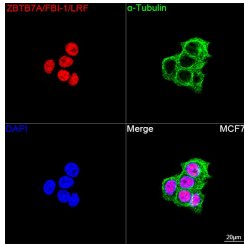
Gene ID	51341
Gene Symbol	ZBTB7A
Uniprot ID	ZBT7A_HUMAN
Immunogen	
Immunogen	450-550
Region	
Specificity	A synthetic peptide corresponding to a sequence within amino acids 450-550 of human ZBTB7A/FBI-1/LRF (O95365).
Immunogen	NYDLKNHMRVHTGLRPYQCD SCCKTFVRSDHLHRHLKKG CNGVPSRRGRKPRVRGGAPD PSPGATATPGAPAQSSPDA
Sequence	RRNQEKHFKDEDEDEVDAS P



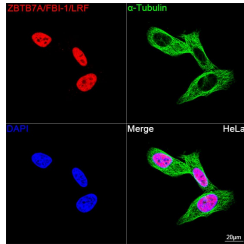
Immunohistochemistry analysis of ZBTB7A/FBI-1/LRF in paraffin-embedded human colon carcinoma using ZBTB7A/FBI-1/LRF Rabbit monoclonal antibody (STJ11103133) at dilution of 1:100 (40x lens). Perform microwave antigen retrieval with 10 mM Tris/EDTA buffer pH 9.0 before commencing with immunohistochemistry staining protocol.



Confocal imaging of U-2 OS cells using ZBTB7A/FBI-1/LRF Rabbit monoclonal antibody (STJ11103133, dilution 1:200) followed by a further incubation with Cy3 Goat Anti-Rabbit IgG (H+L) (dilution 1:500) (Red). The cells were counterstained with Alpha-Tubulin Mouse monoclonal antibody (dilution 1:400) followed by incubation with AB580A 488-conjugated Goat Anti-Mouse IgG (H+L) antibody (dilution 1:500) (Green). DAPI was used for nuclear staining (Blue). Objective: 100x.



Confocal imaging of MCF7 cells using ZBTB7A/FBI-1/LRF Rabbit monoclonal antibody (STJ11103133, dilution 1:200) followed by a further incubation with Cy3 Goat Anti-Rabbit IgG (H+L) (dilution 1:500) (Red). The cells were counterstained with Alpha-Tubulin Mouse monoclonal antibody (dilution 1:400) followed by incubation with AB580A 488-conjugated Goat Anti-Mouse IgG (H+L) antibody (dilution 1:500) (Green). DAPI was used for nuclear staining (Blue). Objective: 100x.



Confocal imaging of HeLa cells using ZBTB7A/FBI-1/LRF Rabbit monoclonal antibody (STJ11103133, dilution 1:200) followed by a further incubation with Cy3 Goat Anti-Rabbit IgG (H+L) (dilution 1:500) (Red). The cells were counterstained with Alpha-Tubulin Mouse monoclonal antibody (dilution 1:400) followed by incubation with AB580A 488-conjugated Goat Anti-Mouse IgG (H+L) antibody (dilution 1:500) (Green). DAPI was used for nuclear staining (Blue). Objective: 100x.

This product is suitable for in-vitro studies under the RESEARCH USE ONLY [RUO] licence. This product must not be used as for diagnostic or other medical purposes.
St John's Laboratory Ltd, Knowledge Dock Business Centre, University Way, London, E16 2RD | Tel: 0208 223 3081