

Anti-Transportin 3 antibody (824-923) [S6MR] (STJ11103126)

GENERAL INFORMATION

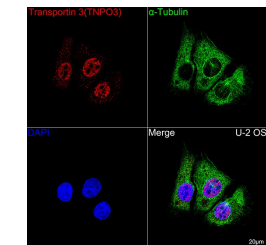
Product Type	Primary antibodies
Short Description	
Applications	WB/IHC-P/IF/ICC/ELISA
Host/Source	Rabbit
Reactivity	Human/Mouse/Rat

PRODUCT PROPERTIES

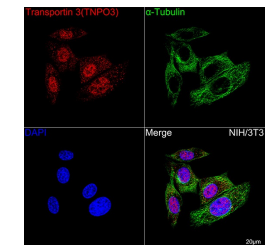
Clonality	Monoclonal
Clone ID	S6MR
Concentration	Lot specific
Conjugation	Unconjugated
Purification	Affinity purification
Dilution Range	WB:1:500-1:1000 IHC-P:1:50-1:200 IF/ICC:1:50-1:200 ELISA:Recommended starting concentration is 1 Mu g/mL. Please optimize the concentration based on your specific assay requirements.
Formulation	PBS with 0.02% Sodium Azide, 0.05% BSA, 50% Glycerol, pH 7.3.
Isotype	IgG
Storage Instruction	Store at-20°C for up to 1 year from the date of receipt, and avoid repeat freeze-thaw cycles.

TARGET INFORMATION

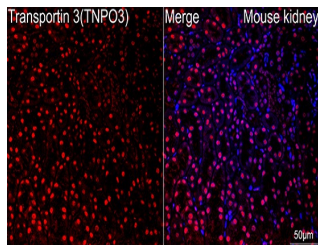
Gene ID	23534
Gene Symbol	TNPO3
Uniprot ID	TNPO3_HUMAN
Immunogen	
Immunogen Region	824-923
Specificity	A synthetic peptide corresponding to a sequence within amino acids 824-923 of human Transportin 3 (Transportin 3 (TNPO3) ) (Q9Y5L0).
Immunogen Sequence	QVMNQLGQQLVSQLLHTCCF CLPPYTLPDVAEVLWEIMQV DRPTFCRWLENSLKGLPKET TVGAVTVTHKQLTDFHKQVT SAEECKQVCWALRDFTRLFR



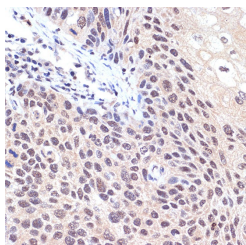
Confocal imaging of U-2 OS cells using Transportin 3 (TNPO3) Rabbit monoclonal antibody (STJ11103126, dilution 1:100) followed by a further incubation with Cy3 Goat Anti-Rabbit IgG (H+L) ( dilution 1:500) (Red). The cells were counterstained with Alpha-Tubulin Mouse monoclonal antibody ( dilution 1:400) followed by incubation with ABFluor 488-conjugated Goat Anti-Mouse IgG (H+L) antibody ( dilution 1:500) (Green). DAPI was used for nuclear staining (Blue). Objective: 100x.



Confocal imaging of NIH/3T3 cells using Transportin 3 (TNPO3) Rabbit monoclonal antibody (STJ11103126, dilution 1:100) followed by a further incubation with Cy3 Goat Anti-Rabbit IgG (H+L) ( dilution 1:500) (Red). The cells were counterstained with Alpha-Tubulin Mouse monoclonal antibody ( dilution 1:400) followed by incubation with ABFluor 488-conjugated Goat Anti-Mouse IgG (H+L) antibody ( dilution 1:500) (Green). DAPI was used for nuclear staining (Blue). Objective: 100x.



Confocal imaging of a paraffin-embedded Mouse kidney tissue using Transportin 3 (TNPO3) Rabbit monoclonal antibody (STJ11103126, dilution 1:100) followed by a further incubation with Cy3 Goat Anti-Rabbit IgG (H+L) ( dilution 1:500) (Red). DAPI was used for nuclear staining (Blue). Objective: 40x. Perform high pressure antigen retrieval with 0. 01 M citrate buffer (pH 6. 0) prior to IF staining.



Immunohistochemistry analysis of Transportin 3 (TNPO3) in paraffin-embedded human esophageal cancer using Transportin 3 (Transportin 3 (TNPO3) ) Rabbit monoclonal antibody (STJ11103126) at dilution of 1:100 (40x lens). Perform microwave antigen retrieval with 10 mM Tris/EDTA buffer pH 9. 0 before commencing with immunohistochemistry staining protocol.

This product is suitable for in-vitro studies under the RESEARCH USE ONLY [RUO] licence. This product must not be used as for diagnostic or other medical purposes.  
St John's Laboratory Ltd, Knowledge Dock Business Centre, University Way, London, E16 2RD | Tel: 0208 223 3081