

Anti-ERp29 antibody (1-102) [S4MR] (STJ11103124)
STJ11103124

GENERAL INFORMATION

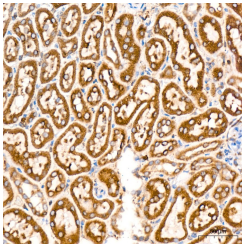
Product Type	Primary antibodies
Short Description	
Applications	WB/IHC-P/ELISA
Host/Source	Rabbit
Reactivity	Human/Mouse/Rat

PRODUCT PROPERTIES

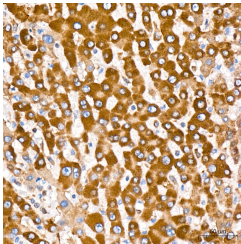
Clonality	Monoclonal
Clone ID	S4MR
Concentration	Lot specific
Conjugation	Unconjugated
Purification	Affinity purification
Dilution Range	WB:1:500-1:2000 IHC-P:1:500-1:1000 ELISA:Recommended starting concentration is 1 µg/mL. Please optimize the concentration based on your specific assay requirements.
Formulation	PBS with 0.02% Sodium Azide, 0.05% BSA, 50% Glycerol, pH 7.3.
Isotype	IgG
Storage Instruction	Store at -20°C for up to 1 year from the date of receipt, and avoid repeat freeze-thaw cycles.

TARGET INFORMATION

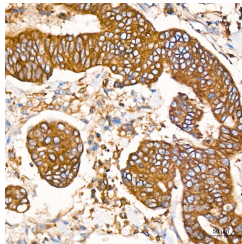
Gene ID	10961
Gene Symbol	ERP29
Uniprot ID	ERP29_HUMAN
Immunogen	
Immunogen Region	1-102
Specificity	Recombinant fusion protein containing a sequence corresponding to amino acids 1-102 of human ERp29 (P30040).
Immunogen Sequence	MAAAVPRAAFLSPLLPLLLG FLLLSAPHGGSGSLHTKGALP LDTVTFYKVIKSKFVLVKF DTQYPYGEKQDEFKRLAENS ASSDDLLVAEVGISDYGDKL NM



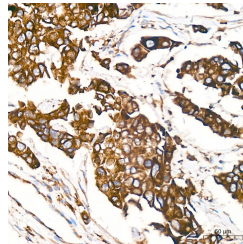
Immunohistochemistry analysis of ERp29 in paraffin-embedded rat kidney tissue using ERp29 Rabbit monoclonal antibody (STJ11103124) at a dilution of 1:1000 (40x lens). High pressure antigen retrieval was performed with 0.01 M citrate buffer (pH 6.0) prior to immunohistochemistry staining.



Immunohistochemistry analysis of ERp29 in paraffin-embedded human liver tissue using ERp29 Rabbit monoclonal antibody (STJ11103124) at a dilution of 1:1000 (40x lens). High pressure antigen retrieval was performed with 0.01 M citrate buffer (pH 6.0) prior to immunohistochemistry staining.



Immunohistochemistry analysis of ERp29 in paraffin-embedded human colon carcinoma tissue using ERp29 Rabbit monoclonal antibody (STJ11103124) at a dilution of 1:1000 (40x lens). High pressure antigen retrieval was performed with 0.01 M citrate buffer (pH 6.0) prior to immunohistochemistry staining.



Immunohistochemistry analysis of ERp29 in paraffin-embedded human breast cancer tissue using ERp29 Rabbit monoclonal antibody (STJ11103124) at a dilution of 1:1000 (40x lens). High pressure antigen retrieval was performed with 0.01 M citrate buffer (pH 6.0) prior to immunohistochemistry staining.

This product is suitable for in-vitro studies under the RESEARCH USE ONLY [RUO] licence. This product must not be used as for diagnostic or other medical purposes.
St John's Laboratory Ltd, Knowledge Dock Business Centre, University Way, London, E16 2RD | Tel: 0208 223 3081