

Anti-SRD5A2 antibody (1-100) [S8MR] (STJ11103118)

STJ11103118

GENERAL INFORMATION

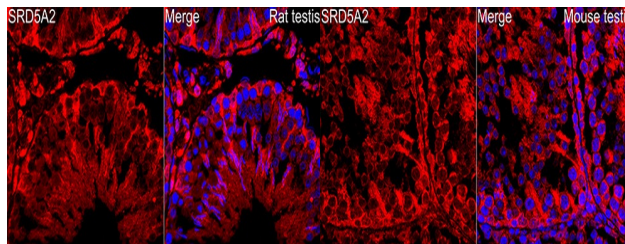
| | |
|--------------------------|--------------------|
| Product Type | Primary antibodies |
| Short Description | |
| Applications | WB/IF/ICC/ELISA |
| Host/Source | Rabbit |
| Reactivity | Human/Mouse/Rat |

PRODUCT PROPERTIES

| | |
|----------------------------|-------------------------------------------------------------------------------------------------------------------------------------------------------------------------------|
| Clonality | Monoclonal |
| Clone ID | S8MR |
| Concentration | Lot specific |
| Conjugation | Unconjugated |
| Purification | Affinity purification |
| Dilution Range | WB:1:1000-1:2000 IF/ICC:1:100-1:400 ELISA:Recommended starting concentration is 1 Mu g/mL. Please optimize the concentration based on your specific assay requirements. |
| Formulation | PBS with 0.02% Sodium Azide, 0.05% BSA, 50% Glycerol, pH 7.3. |
| Isotype | IgG |
| Storage Instruction | Store at -20°C for up to 1 year from the date of receipt, and avoid repeat freeze-thaw cycles. |

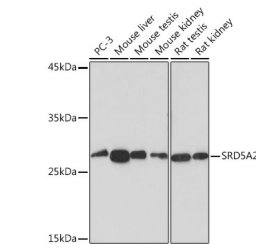
TARGET INFORMATION

| | |
|---------------------------|---------------------------------------------------------------------------------------------------------|
| Gene ID | 6716 |
| Gene Symbol | SRD5A2 |
| Uniprot ID | S5A2_HUMAN |
| Immunogen | |
| Immunogen Region | 1-100 |
| Specificity | A synthetic peptide corresponding to a sequence within amino acids 1-100 of human SRD5A2 (P31213). |
| Immunogen Sequence | MQVQCQSPVLGASATLVAL GALALYVAKPSGYGKHTESL KPAATRLPARAAWFLQELPS FAVPAGILARQPLSLFGPPG TVLLGLFCVHYHFRTFVYSL |



Immunofluorescence analysis of paraffin-embedded rat testis using SRD5A2 Rabbit monoclonal antibody (STJ11103118) at dilution of 1:100 (40x lens). Secondary antibody: Cy3 Goat Anti-Rabbit IgG (H+L) at 1:500 dilution. Blue: DAPI for nuclear staining.

Immunofluorescence analysis of paraffin-embedded mouse testis using SRD5A2 Rabbit monoclonal antibody (STJ11103118) at dilution of 1:100 (40x lens). Secondary antibody: Cy3 Goat Anti-Rabbit IgG (H+L) at 1:500 dilution. Blue: DAPI for nuclear staining.



Western blot analysis of various lysates using SRD5A2 Rabbit monoclonal antibody (STJ11103118) at 1:1000 dilution. Secondary antibody: HRP Goat Anti-Rabbit IgG (H+L) (STJ5000856) at 1:10000 dilution. Lysates/proteins: 25 Mu g per lane. Blocking buffer: 3% nonfat dry milk in TBST. Detection: ECL Basic Kit. Exposure time: 180s.

This product is suitable for in-vitro studies under the RESEARCH USE ONLY [RUO] licence. This product must not be used as for diagnostic or other medical purposes.
St John's Laboratory Ltd, Knowledge Dock Business Centre, University Way, London, E16 2RD | Tel: 0208 223 3081